



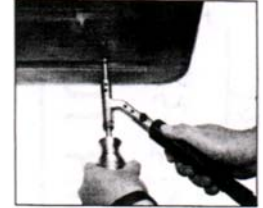
**KA-5524 Multi Function Auto Body Repair Kit**

1. Wipe damaged area with clean soft cloth to remove dirt and grime.
2. Choose adapter and apply sufficient glue with glue gun.
3. Apply adapter with glue to damaged area. For small damaged areas start at outer edges and continue towards centre and opposite edges. For larger areas apply to outer edges first. Allow 3 to 5 minutes to dry. Pouring cold water to glue will speed drying process.
4. Insert pulling bar to adapter and screw in tightly.
5. Slide hammer close to adapter. Quickly slide hammer against handle bar. Repeat if necessary. If adapter separates apply a small amount of glue to adapter and re-apply to damaged area.
6. Use supplied scraper to remove glue from damaged area and adapter



**KA-5551 Automatic Welding Slide Hammer**

- Full length: 435mm
- Connect the positive handle of welding machine into the connector.
- To weld and slide the hammer at the same time.



**KA-5543 Body And Fender Dent Puller**

Often, the biggest time-consuming part of dent removal is the removal and installation of interior panels and upholstery. This tool eliminates those steps. Simply drill a hole at the base of the dent and thread in the tool's self-tapping screw. A few sharp blows of the slide hammer will pull the dent out.

- Puller is 17" long with praline handle grip.



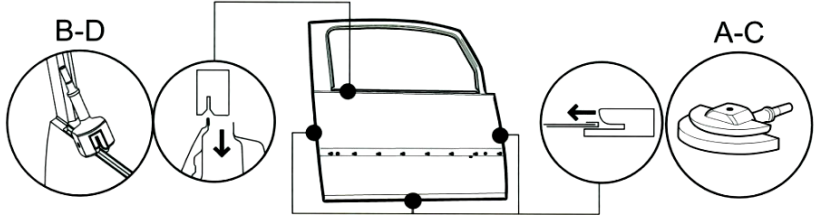
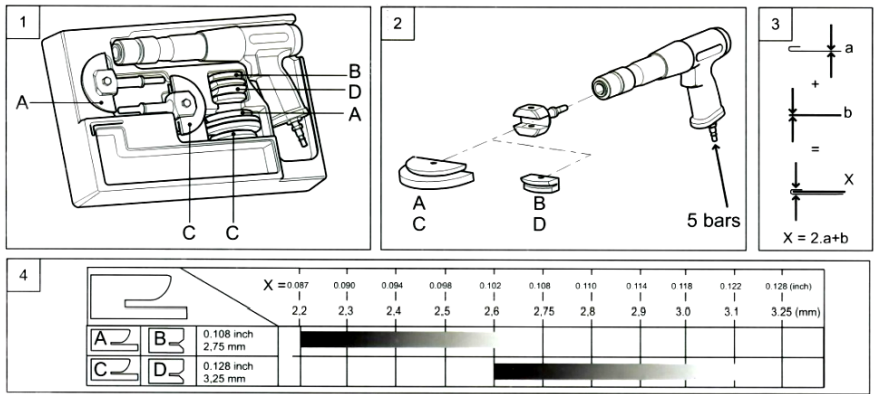
**KA-1309 10Lbs 9pc Dent Puller Kit**

1309-1 Slide Bar (Ø22.5mm x L590mm)	1pc
1309-2 Pipe (Ø22.5mm x L220mm)	1pc
1309-3 Hammer (10 Lbs Castiron)	1pc
1309-4 Hook W6mm x L170mm	1pc
1309-5 Hook W6mm x L120mm	2pc
1309-6 Hook W6mm x L200mm	1pc
1309-7 Hook W3mm x L100mm	1pc
1309-8 Two Hole Pipe Ø29 x 40mm	1pc
1309-9 Chain & Hook	1pc
Tapping Scrw	1pc



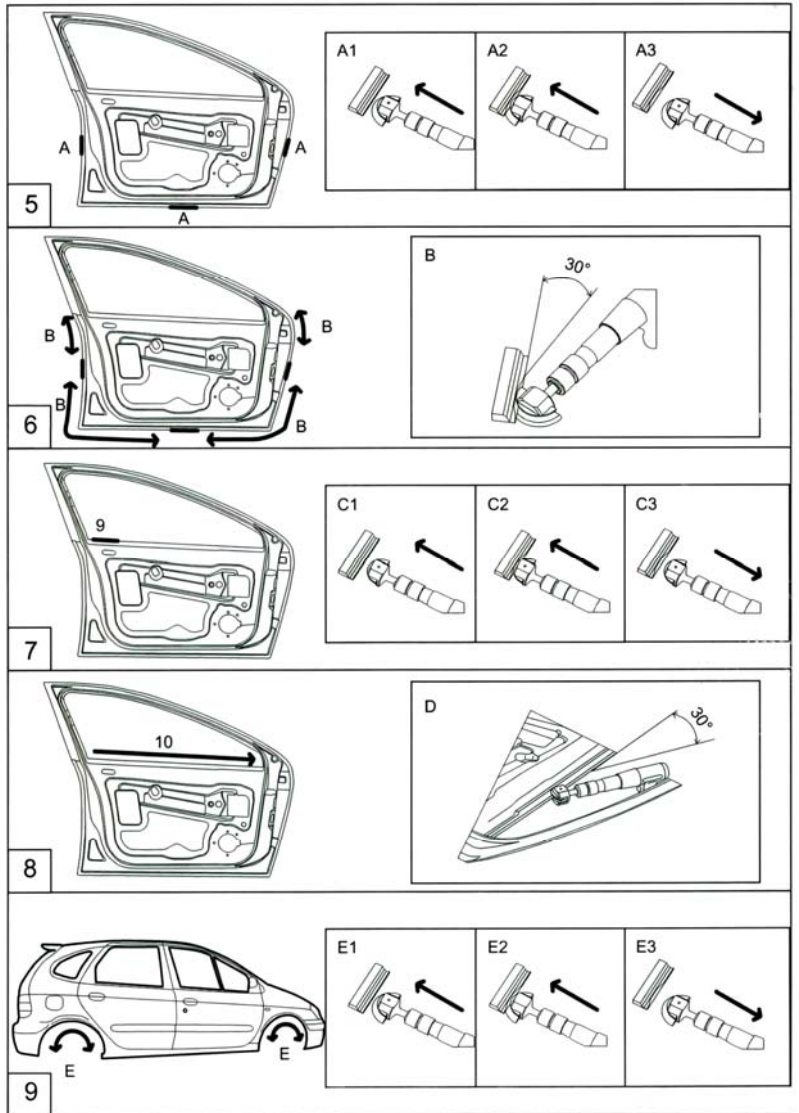
**KA-1309A H/D 12Lbs 10pc Dent Puller Kit**

Handle Bar (Ø32mm x L130mm)	1pc
Slide Bar (Ø16mm x L590mm)	1pc
Hammer (12 Lbs Castiron)	1pc
Hook W6mm x L170mm	1pc
Hook W6mm x L90mm	1pc
Hook W6mm x L110mm	1pc
Hook W6mm x L90mm	1pc
Hook W3mm x L70mm	1pc
Chain & Hook	1pc
Tapping Screw	2pcs



**KA-3670 Door Dressing Tools**

- Door Dressing Tools system is an European wide bending or crimping system. With pneumatic air pressure door skins, wheel arches etc. can be crimped or bent in minutes.
- The system contains a special pneumatic hammer, 4 different pillows for different metal or aluminum thicknesses and one adapter.
- Special pillow sizes are available on demand.



# For Drying New RoHS Water Paint !!

## Paint Dry Blower Gun



**PA- J1001**  
Material of rear of gun: Aluminum

**PA-J1001-S1E**  
Material of rear of gun: Plastic



**High Air Suction  
Low Air Consumption  
For Efficiently Drying RoHS –  
Approval Water Paint!!**

- Variable air flow.
- Working pressure: 2~4 bar
- Max pressure: 12 bar.
- Air consumption : 4 bar :350 L/min
- Weight : 460g
- Sound pressure: 4 Bar :72dB
- **Low Air Consumption**
- **High Air Suction**
- Body: Aluminum
- Handle: Plastics
- Cold Wind
- Assemble with dust shield net.

**Optional Accessory**

**PA- J1001-S1 Paint Dry Stand – Stationary**  
(Paint Dry Blower not included)



**Optional Accessory**

**PA- J1001-S2 Paint Dry stand-Rotary**  
(Paint Dry Blower not included)

- The foot shelf can be adjusted from side to side, up & down.
- Max. Height: 210cm
- Min. Height: 20 cm
- Pole (Arm) Length:89cm
- The length of foot shelf: 96 cm
- Weight: 4.5 kg
- 360° Rotary Action



A Comprehensive Kit Which Effectively Smooths Out And Repairs The Dents Caused By Hail, Stone Or Door Dent And All Sort Of Cosmetic Damages.

No more needing the re-painting of the car body!!

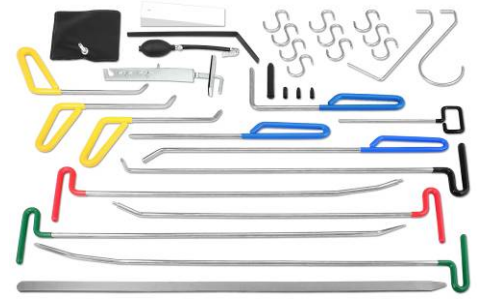
Save Money & Time !!



**KA-7817**  
32pcs Paintless Dent Repair Kit



**KA-7817A**  
33pcs Paintless Dent Repair Kit



**KA-7817A-C (Colorful)**  
33pcs Paintless Dent Repair Kit



Length:73mm  
Ø: 5mm



Length:287mm  
Ø 6mm



Length:260mm  
Ø 6mm



Length:240mm  
Ø: 6mm



Length:320mm  
Ø: 3mm



Length:350mm  
Ø: 10mm



Length:310mm  
Ø: 10mm



Length:310mm  
Ø: 10mm



Length:460mm  
Ø: 10mm



Length:460mm  
Ø: 10mm



Length:700mm  
Ø: 10mm



Length:700mm  
Ø: 10mm



Length:725mm  
Ø: 10mm



Length:745mm  
Ø: 10mm



Length:780mm  
Ø: 10mm



Length:900mm  
Ø: 11mm



Length:912mm  
Ø: 6mm



**KA-5552K Body Dent Remover**

- 1pc - Slide Hammer
- 1pc - L Hook
- 3pcs - Screws



**PA-A-2013 1-1/2" 13pc Wheel Hub Resurfacing Kit**

Rust build-up on brake rotors can cause warping, and that causes pulsation and diminished braking. This kit attacks the rust on lug studs and rotors on the hub assembly faster and easier than anything you've used before. Usable on most domestic and import vehicles with either front or rear disc brakes. The tool fits you power drill.

**PA-A-2014 RIP Strip Disc Set**

- Size: 65mm, 105mm
- Operational:

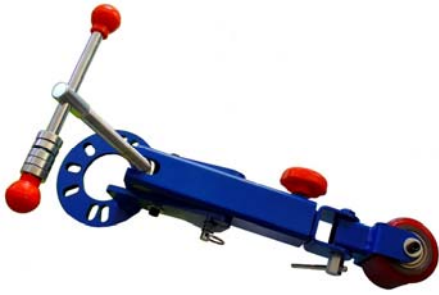


*Note: Do not use Extension Bar*



**KA-3509 Economic Electric Paint Spray Gun**

Housing Material	Plastic Housing
Size (mm)	210(L) x 130(W) x 210(H)
Max. Delivery Rate	170 g/min
Voltage	110V / 220V
Weight	1.0kg
Cup Capacity	0.9L
Viscosity Rating	60DIN-Sec.
Nozzle Dia.	0.5mm



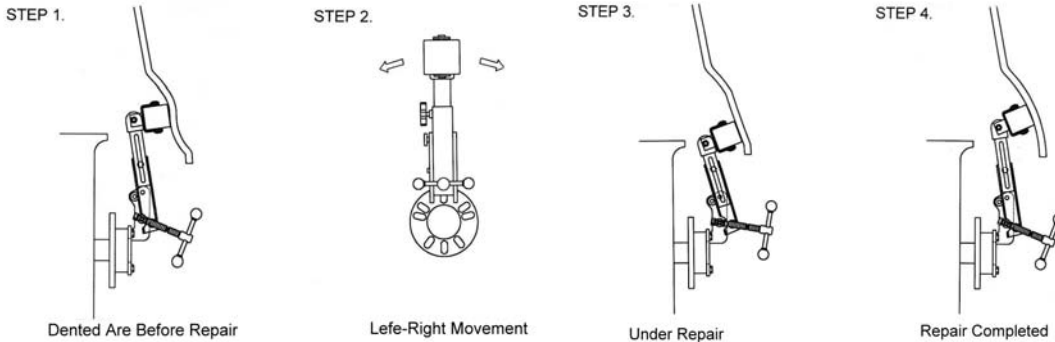
**KA-6550 Fender Reforming Tool** (for JAPAN & EUROPEAN cars)

**Features:**

- Enlarge fender for replace larger and wider.
- Tire fender reforming for dent car.
- Universal type for 3, 4, 5 lugs wheel.

- STEP 1. Dented are before repair  
 STEP 2. Lefe-right movement  
 STEP 3. Under repair  
 STEP 4. Repair completed

**METHOD OF USE AS ILLUSTRATED IN THE DRAWINGS**



**KA-6043 Bonnet Cleaning Tool**

Run the spur wheels over your buffing pad or bonnet and it will work or dislodge and remove dry hardened polish.



**KA-5552 Slide Hammer Hook Set**

- Full length: 435mm
- To pull out the washer which welding in the indentation.



**KA-1318 5 Pound Knocker Set**

Set contains hammer and shaft, nose piece, puller and screw package, door edge tool and nut package  
 Square hammer with solid steel shaft  
 Heat-treated attachments



**KA-6809 Mighty Midget Panel Clamps**

A card of five clamps. Use clamps to hold panels in place for welding. Small profile allows door to be closed for alignment check before welding. Compact size allows for a multitude of uses.

**H/D G CLAMP**



- KA-6301
- KA-6302
- KA-6303
- KA-6304
- KA-6305

	CAPACITY	DEPTH
KA-6301	0 ~ 2" (50mm)	1-1/8"
KA-6302	0 ~ 3" (75mm)	1-1/4"
KA-6303	0 ~ 4" (100mm)	1-3/4"
KA-6304	0 ~ 6" (150mm)	2-1/2"
KA-6305	0 ~ 8" (200mm)	3-3/4"



**KA-6010 C-Clamp**

- Capacity: 5 ton
- Multi-way pull operation.
- Throat opening: 3"
- Small C-shaped design for get into inner to work.



**KA-6011 C-Clamp**

- Capacity: 4 ton
- Multi-way pull operation.
- Throat opening: 6"
- Large C-shaped design for getting into inner to work.



**KA-6008 Long Nose Clamp**

- Capacity: 2 ton
- Bolt size: 14m/mØ x 73 m/mL
- Single-way pull operation.
- The flat design is specialize for the confined room.



**KA-6009 Unibody Clamp**

- Capacity: 5 ton
- Single-way pull operation.
- When the damage is in the middle of car plate and it is not easy to fix by those clamps. This modle of tool is using to fix this kind of problems.



**KA-7820 Pull Clamp**

- Capacity: 6 ton on straight way.
  - Single-way pull operation.
  - Serrate width:100mm
  - Can make straight6 angle pull with this clamp.
  - Replaceable hardened steel jaws come as standard
- 

**KA-7821 Right Angle Clamp & Yoke**

- Capacity: 6 ton on straight way, 3 ton on cross way.
  - Two-way pull operation.
  - Serrate width:100mm
  - Can make straight angle pull with this clamp.
  - Replaceable hardened steel jaws come as standard.
- 

**KA-7822 Pull Clamp**

- Capacity :6 ton on straight way.
  - Single-way pull operation.
  - Serrate width:100mm
  - Can make straight angle pull with this clamp.
  - Replaceable hardened steel jaws come as standard
- 

**KA-7823 Right Angle Clamp**

- Capacity : 6 ton on straight way, 3 ton on straight way.
  - Single-way pull operation.
  - Serrate width:100 mm
  - Can make straight angle pull with this clamp.
  - Replaceable hardened steel jaws come as standard.
- 

**KA-7791 Pull Clamp**

- 100mm Universal Pull Clamp with Right Angle Pull
  - 6 Ton
- 

**KA-7792 Pull Clamp**

- Deep Jaw and Self-locking Clamp
  - 10 Ton
-





**KA-6012 Multi Clamp**

- Jaw width: 120mm (4")
- 3 ton – cross
- 5 ton – straight way
- 3 ton – multi direction



**KA-6013 Frame Rack Clamp (Two-Way)**

- Multi clamp
- Jaw width: 120mm (4")
- Capacity: 3 ton – cross
- 5 ton – straight way



**KA-6014 Frame Rack Clamp**

- Link Clamp
- Capacity: 5 ton
- Single-way pull operation.
- Serrate length: 120mm
- The special puller design used with plate makes it hard to be broken.
- Bolt size: 14m/mØ x 73m/mL



**KA-6250 Self-Tightening Clamps**

- Minimum size, maximum capabilities for tight places.
- Responsive, spring-loaded, one-handed application for fast action pulls.
- Round wedge allows chain to be pulled free of twists.
- Aggressive cross-hatch tooth design.
- Capacity: 5 ton



**KA-6251 Self-Tightening Clamp**

- Self-tightens: the harder it's pulled, the tighter it grips.
- Heat-treated steel clamp is positioned on work with wedge forward and nut just finger tight.
- Easy to attach no special wrench needed.
- 2-1/4" (57.2mm) jaws.
- Capacity: 6 ton



**KA-6252 Self-Tightening Clamp**

- Self-tightening clamp; grips tighter as it is pulled.
- Compact and lightweight for pulling from many places.
- Minimum of 1-1/2" reach-around for flanges, cowls, pinch welds, and lips.
- Butts against panels where only narrow bite available.
- 1-1/4" (31.8mm) jaws give added grip.
- Capacity: 6 ton



**KA-6015 Pour Clamp**

- Capacity: 5 ton
- Single-way pull operation
- For heavy duty



**KA-6016 Back Clamp**

- Capacity: 5 ton.
- Single-way pull operation



**KA-6017 Back Clamp**

- Capacity: 2 ton Cross way  
5 ton Straight way
- Two-ways pull operation



**KA-6018 Self-Tightening Clamp**

- Capacity: 3 ton
- Single-way pull operation
- Same sizes for two jaws



**KA-6019 Self-Tightening Clamp**

- Capacity: 3 ton
- Use for small space
- Single-way pull operation
- Different sizes for two jaws



**KA-6020 Self-Tightening Clamp**

- Capacity: 2 ton Cross way  
3 ton Straight way
- Two-ways pull operation
- Different sizes for two jaws



**KA-6022 Scissor Clamp**

- Capacity: 3 TON



**KA-6075 Double Hook Clamp**

- Capacity: 6 ton



**KA-6076 Double Hook Clamp**

- Capacity: 6 ton



**KA-6021 Double Hook Clamp**

Capacity: 6 ton  
For use as chain shortner or chain connector.  
Use with 5/16", 3/8" chains.



**Chain & Hook**

- KA-4306** 3/8" X 9F
- KA-4307** 5/16" X 9F
- Capacity: 6 ton



**KA-4306L Chain & Hook**

- 5/16" X 9FT
- Capacity: 5 ton
- FLAT HOOK WITH SAFETY LEVER



**KA-6072 Handy Hook**

- Pulling after fixing the hook into the indentation.



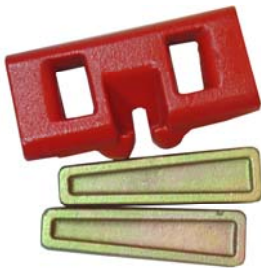
**KA-6023 Chain Joint (Double Connector)**

- Capacity: 6 ton
- Use with 5/16" or 3/8" chains.
- This tool enables you to use two clamps side by side for more pull.



**KA-6024 Chain Joint (For Two Clamp)**

- Capacity: 6 ton
- Use with 5/16" or 3/8" chains.
- For use pulling tow clamp



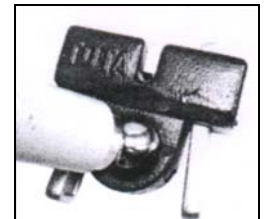
**KA-4308 Chain Fixing Base**

- Applicable chain: 5/16", 3/8"
- Include two bolts to fix the stander.
- 6 sets/24/24.5/0.31'



**KA-4309 Ball Pivot Base**

- Applicable chain: 5/16", 3/8"
- Include two pins to fix the stander.
- Install the model 8P104 into the indentation to change the way when operator use the tool.



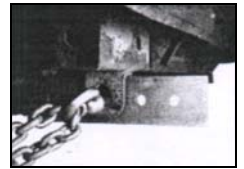
**KA-6193 Air Pump**

- This air-power hydraulic pump is designed for using with single-acting cylinders and tools.
- Rugged construction and most components are made of aluminum alloy are built for long service life, easy operation and portability.
- Automatic overload relief setting as 10000 psi protects components in hydraulic system and work safely regardless of air pressure.
- New inlet & outlet design feature low exhausting air volume, non-noise effect and being operated in all directions.



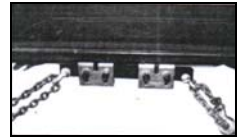
**KA-6073 Door Post Puller**

- Applicable chain: 5/16", 3/8"
- Fixed on the car to pull sidelong-line.



**KA-6074 Frame Rack Clamp Bar**

- Capacity: 5 ton
- Bolt size: 14m/mØ x 73 m/mL
- Use the two hooks to pull and fix the car. This tool could be clipped to unibody or any other place of the body.
- The puller and hooks are adjustable, it could be change the range for fitting the place.



**KA-7802 Mini Quarter Puller**

- A great puller for taillight opening gap and for radiator support.
- Especially for small opening gap.



**KA-7803 Quarter Puller**

Special design for well pulling the rear quarter and wheel. Hang above the lip of the wheel opening. The curvature structure on each side to universally fit all cars. Special feature to decrease the tearing on the thin metal sheet.



**KA-7525 Corrosion Assessment Tool**

- Combined tapping hammer, blunt scraper and short lever.
- For checking bodywork and structural corrosion.
- Designed by the vehicle inspectorate.



**KA-7752 Powerbar Hand Impact Wrench**

Remove and replace Harmonic Balancer Pulleys. Up to 600 ft/lb of torque. Applications include pulleys, flywheels, couplings, flanges, lawn mowerbase plate, etc.



- Front cover made with PVC *Sponge Leather*, backing is TR/BRUSH which does not damage or scratch any surface.
- Top row includes **STRONG magnets**, which attract and stay on any metal surface easily.
- Easy to open and fold into compact size.
- The magnets are removable and replaceable before and after washing the fender cover.



KA-6671B



KA-6671C



KA-6671P



KA-6671NP



KA-6671H

Item No.	description	size
KA-6671B	Magnetic Fender Cover	800 X 600MM (31-1/2" X 23-3/4")
KA-6671C	Magnetic Fender Cover	1080 X 390MM (42-1/2" X 15-3/8")
KA-6671P	Magnetic Fender Cover With Pocket with 4 tool holding pockets	1100 X 560MM (43-1/4" X 22")
KA-6671NP	Magnetic Fender Cover Without Pocket	
KA-6671H	Magnetic Fender Cover	1060 X 590MM (42" X 23-1/4")

**Brush Kit**



KA-3527-1



KA-3527-2



KA-3528



KA-3528-2



KA-3528-3



**KA-5246 3-IN-1 Protector Cover**

- Seat covers
- Steering wheel covers
- Handle covers





**KA-6639**  
**Universal Spot Weld Cutter Set**



**Spot Weld cutter Replacement Blades**

**KA-5247** size 5/16" 3pc/set  
**KA-5248** size 3/8" 3pc/set



**1/4" Arbor Spot Weld Cutters**

Quick drills out spot welds on fenders, doors, etc.  
Retractable pilot assures accurate cut.  
Double-edged 3/8" (5/16") cutting blade assures extra-long life.  
Top-quality steel cutting blades, have extra-large finish-ground teeth for fast, cool cutting.  
500 R.P.M. working speed 1/4" arbors.  
For use with all 1/4" or larger variable-speed drills.  
Heat-treated tool steel blades.

**KA-6044B** 5/16" Spot Weld Cutter  
**KA-6044A** 3/8" Spot Weld Cutter  
**KA-6044K** 2pc/set 5/16" & 3/8"



**KA-7511K Spot Weld Cutter Set**

- Contents:
- 13/8" spot weld cutter 2pcs
  - 3/8" spot weld blade 2pcs
  - 15/16" spot weld cutter 2pcs
  - Tip for spot weld cutter 2pcs



**KA-2814 Bulbs Pliers**

- Special Pliers For Mounting And Dismounting Wedge Base Bulbs.
- Use For Most Car.



**KA-6667 Emergency Hammer**

- Vital & useful device to break car windows and cut off the safety belts.
- Capable in breaking all kinds of window
- Dimensions: 185(L) x 85(W) x 35(H) mm



**KA-6667B**  
**Rescue Hammer With LED Light**

- This tool may save your life when in a car accident.
- The head of rescue hammer can shatter windows in the nick of time. It can also be used to cut through a seatbelt easily with its build-in razor-sharp blade.
  - When it is dark, just click the LED light button and this unit can be used as a flashlight.
  - Dimensions: 193(L) x 55(W) x 25(H)mm



**KA-3510A**  
**Flanger / Punch Tools**  
 Size: 5MM Dia



**KA-3510B** **Punch Tools**  
 Size: 5MM Dia



**KA-3510C** **Flanger Tools**

**KA-5080 V-Notch Cutting Tool**

A great tool that cuts and produces a proper V-notch on the urethane nozzle.

Procedure:

1. Use KA-5080 to cut off a little bit at the end of the nozzle and leave enough length for the cutter to go in.
2. Insert KA-5080 until you reach the desired length and squeeze the handle to cut.

**Characteristics:**

Body: Chrome Metal, Jaw: Tempered Steel, Thumb Stopper, Lock-Jaw device.  
 Non-Slip Coated Handle with Spring to save labor and prevent fatigue.



**TIP**



**Make cutting a V-Notch safer and easier**

**KA-J90001 19.5mm Hole Saws (HL Type)**

- Suitable for Reverse Parking Sensor

**Feature:**

1. Can cut materials up to 5mm thick.
2. The cutting length is 28mm.
3. Tungsten carbide tipped cutting edges.
4. The slug is spring ejected when cutting is finished.
5. Can faster and smoother cuts.
6. Can be used on portable and pillar drilling machines.

**Specifications:**

From 15mm to 100mm (other sizes available by request)

**Applications:**

Stainless steel plate, alloy steel plate, Iron plate, Copper plate, Aluminum plate, Electrical controller box, Channel iron, Brass plate, F.R.P., Other hard compound metallic plates

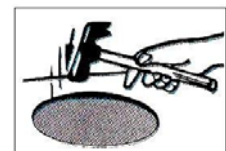


**KA-3114 Drywall Circle Cutter**

- Ideal for cutting round holes in wallboard for air conditioning, heating, plumbing and electrical fixtures.
- Clean cuts up to 16" diameter
- Calibrations in 1/8" increments assure accuracy
- Operation:

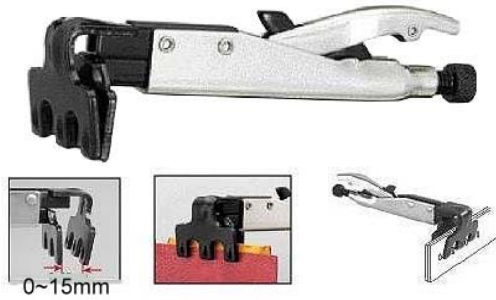


1. Mark the center of hole, set the radius, insert needle-point and rotate the cutter.
2. Repeat procedures on the other side of wallboard



3. Tap the hole lightly with a hammer

- Straight line motion of mobile jaw allows for perpendicular clamping – helps avoid panels ‘slipping’ out of alignment when clamped.
- True one handed operation, push button on top allows for controlled release of clamp with thumb while hand grips both handles.
- Ergonomic design provides easy and comfortable usage.
- Small size and perpendicular clamping motion for easy access into f difficult areas and confined areas.



**KA-2334 W Type Axial Plier**

- W-Type clamps lap joints allowing four consecutive spot welds without tool removal.
- Spot welding auto-body repair work. Steel Fabrication.
- Material: Jaw – CR-MO, Body – Iron with heat treated.

Item No.	Size	Jaw Adjustment	Weight
KA-2334	200mm	0 -15mm	560g



**KA-2335 JJ Type Axial Plier**

- JJ-Type clamps two flanged lapped or adjacent joints.
- Auto-body repair work. Steel Fabrication.
- Material: Jaw – CR-MO, Body – Iron with heat treated.

Item No.	Size	Jaw Adjustment	Weight
KA-2335	230mm	0 -15mm	560g



**KA-2336 LL Type Axial Plier**

- LL-Type clamps two butt or adjacent joints
- Enables work in tight spots even through holes.
- Material: Jaw – CR-MO, Body – Iron with heat treated.

Item No.	Size	Jaw Adjustment	Weight
KA-2336	215mm	0 -10mm	515g



**KA-2337 J Type Axial Plier**

- J-Type clamps two flanged lap joints
- Enables work in tight spots even through holes.
- Material: Jaw – CR-MO, Body – Iron with heat treated.

Item No.	Size	Jaw Adjustment	Weight
KA-2337	210mm	0 -15mm	515g



**KA-2338 L Type Axial Plier**

- Push button release: Easy and efficient ONE-Handed releasing
- Allow work in narrow areas
- Material: Jaw – CR-MO, Body – Iron with heat treated.

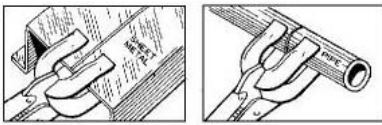
Item No.	Size	Jaw Adjustment	Weight
KA-2338	195mm	0 -18mm	460g





**KA-2336K 5pcs Axial Plier Set**

- Content:**  
 KA-2334 W type axial plier  
 KA-2335 JJ type axial plier  
 KA-2336 LL type axial plier  
 KA-2337 J type axial plier  
 KA-2338 L type axial plier



**Locking Welding Clamp**


- Designed to hold round, angled, or flat work for welding.
- U-shaped jaws provide enhanced visibility and more working space.
- For use in welding applications or for holding awkward shapes in place.
- Material: Jaw – CR-MO, Body – CR-MO

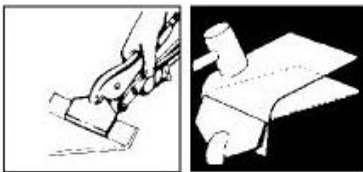
Item No.	Size	Jaw Adjustment	Weight	Type
KA-2346	9"(225mm)	0-60mm	585g	 U.S.A.
KA-2347	11"(265mm)	0-85mm	715g	 U.S.A.
KA-2346-E	9"(225mm)	0-60mm	585g	 European
KA-2347-E	11"(265mm)	0-85mm	715g	 European



**KA-2346-AA Locking Welding Clamp**

- Designed to hold round, angled, or flat work for welding.
- U-shaped jaws provide enhanced visibility and more working space.
- For use in welding applications or for holding awkward shapes in place.
- Material: Jaw-Iron, Body-Iron

Item No.	Size	Jaw Adjustment	Weight	Type
KA-2346-AA	9"(225mm)	0-60mm	585g	 U.S.A.



**Locking Sheet Metal Tool**


- Locks on to work to eliminate hand gripping.
- Makes bending, forming and crimping sheet metal easier.
- Also excellent for upholstery work.
- Material: Jaw – CR-MO, Body – CR-MO

Item No.	Size	Jaw Adjustment	Weight	Type
KA-2348	8"(200mm)	35mm	490g	 U.S.A.
KA-2349	10"(240mm)	50mm	750g	 U.S.A.
KA-2348-E	8"(200mm)	35mm	490g	 European
KA-2349-E	10"(240mm)	50mm	750g	 European



**KA-2348-AA Locking Sheet Metal Tool**

- Locks on to work to eliminate hand gripping.
- Makes bending, forming and crimping sheet metal easier.
- Also excellent for upholstery work.
- Material: Jaw-Iron, Body-Iron

Item No.	Size	Jaw Adjustment	Weight	Type
KA-2348-AA	8"(200mm)	35mm	490g	 U.S.A.

**Locking C-Clamp With Regular Tips**

- Jaws reach around odd shapes to hold material, providing deep reach and access in hard to reach areas.
- Wide-Opening jaws provide greater versatility in clamping a variety of shapes.
- Popular in welding and steel framing.



**Material: Jaw – CR-MO, Body – CR-MO**

Item No.	Size	Jaw Adjustment	Weight	Type
KA-2343	6”(170mm)	0-45mm	230g	 U.S.A.
KA-2344	11”(280mm)	0-91mm	740g	
KA-2345	18”(440mm)	0-221mm	1180g	
KA-2343-E	6”(170mm)	0-45mm	230g	 European
KA-2344-E	11”(280mm)	0-91mm	740g	
KA-2345-E	18”(440mm)	0-221mm	1180g	

**Material: Jaw – Iron, Body – Iron**

Item No.	Size	Jaw Adjustment	Weight	Type
KA-2343-AA	6”(170mm)	0-45mm	230g	 U.S.A.
KA-2344-AA	11”(280mm)	0-91mm	740g	
KA-2345-AA	18”(440mm)	0-221mm	1180g	

**Locking C-Clamp With Swivel Pads**

- Swivel pads hold tapered work, awkward fabricating jobs, and delicate projects without damaging the work surface.
- Guarded release trigger quickly unlocks and protects from accidental release



**Material: Jaw – CR-MO, Body – CR-MO**

Item No.	Size	Jaw Adjustment	Weight	Type
KA-2342	6”(170mm)	0-45mm	230g	 U.S.A.
KA-2341	11”(280mm)	0-91mm	740g	
KA-2340	18”(440mm)	0-221mm	1180g	
KA-2342-E	6”(170mm)	0-45mm	230g	 European
KA-2341-E	11”(280mm)	0-91mm	740g	
KA-2340-E	18”(440mm)	0-221mm	1180g	

**Material: Jaw – Iron, Body – Iron**

Item No.	Size	Jaw Adjustment	Weight	Type
KA-2342-AA	6”(170mm)	0-45mm	230g	 U.S.A.
KA-2341-AA	11”(280mm)	0-91mm	740g	
KA-2340-AA	18”(440mm)	0-221mm	1180g	



**KA-2339 I Type Clamping Tool**

- Length: 96mm
- Opening: 0-15mm
- Weight: 125g

**Locking Plier**

- Curved jaw puts tremendous pressure on four points of any style nut or bolt head, includes convenient wire cutter.
- Turn screw to adjust pressure and fit work, stays adjusted for repetitive use.
- Material: Jaw – CR-MO, Body – CR-MO




Item No.	Size	Jaw Adjustment	Weight	Type
KA-2340RA	5"(140mm)	0-33mm	170g	 U.S.A.
KA-2341RA	7"(180mm)	0-43mm	340g	
KA-2342RA	10"(250mm)	0-55mm	515g	
KA-2340RE	5"(140mm)	0-33mm	170g	 European
KA-2341RE	7"(180mm)	0-43mm	340g	
KA-2342RE	10"(250mm)	0-55mm	515g	

**Locking Plier**

- Material: Jaw – Iron with heat treatment, Body – Iron




Item No.	Size	Jaw Adjustment	Weight	Type
KA-2343RA	7"(128mm)	0-43mm	340g	 U.S.A.
KA-2344RA	10"(250mm)	0-55mm	515g	

**KA-2343RE Locking Plier**

- Chrome Vanadium Steel Drop Forged Jaws
- Material: Jaw CR-V, Body :CR-MO



Item No.	Size	Jaw Adjustment	Weight	Type
KA-2343RE	7"(128mm)	0-43mm	340g	 European

**Straight Jaw Locking Plier**

- Straight jaws provided maximum contact on flat, square or hex work
- Ideal for tightening, clamping twisting and turning.
- Turn screw to adjust pressure and fit work, stays adjusted for repetitive use.
- Material: Jaw CR-V, Body :CR-MO



Item No.	Size	Jaw Adjustment	Weight
KA-2345RS	7"(180mm)	0-30mm	365g
KA-2346RS	10"(230mm)	0-48mm	540g

**Long Nose Locking Plier**

- Long, straight nose provides easy access in narrow, hard-to-places. Ideal for precision work hobbies.
- Turn screw to adjust pressure and fit work, stays adjusted for repetitive use.
- Material: Jaw – CR-MO, Body – CR-Mo



Item No.	Size	Jaw Adjustment	Weight	Type
KA-2345LA	6"(170mm)	0-47mm	180g	
KA-2346LA	9"(230mm)	0-63mm	385g	
KA-2345LE	6"(170mm)	0-47mm	180g	
KA-2346LE	9"(230mm)	0-63mm	385g	

**Parrot Plier**

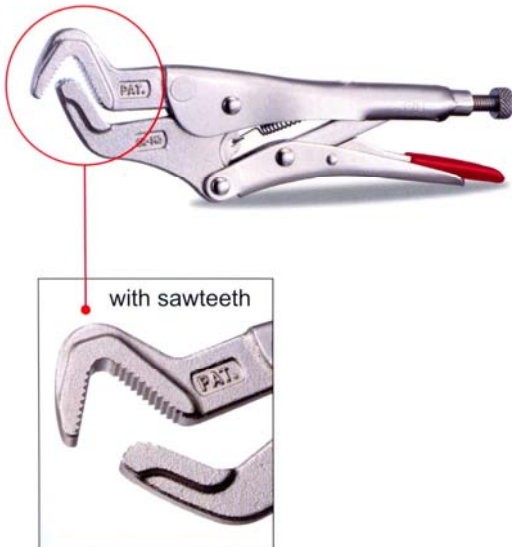
- For clamping plumbing and roundoff screws
- For clamping small to large screws
- Smooth 、 fast screw clamping and releasing
- Material: Jaw-CR-MO; Body-CR-MO



Item No.	Size	Jaw Adjustment	Weight	Type
KA-1269	8.5"(215mm)	6-32mm	405g	
KA-1270	8.5"(215mm)	6-28mm	405g	
				

**Parrot Plier With Sawteeth**

- 2X stronger to clamp the screws especially on round ones
- For clamping plumbing and round off screws
- For clamping small to large screws
- Smooth 、 fast screw clamping and releasing
- Material: Jaw-CR-MO; Body-CR-MO



Item No.	Size	Jaw Adjustment	Weight	Type
KA-1271	8.5"(215mm)	6-32mm	405g	
KA-1272	8.5"(215mm)	6-28mm	405g	
				





**KA-4321 Brass Pin Punch Set**

- 1/4" x 4" (6 x 100mm)



**KA-4322 Brass Pin Punch Set**

- 3/8" x 6" (10 x 150mm)



**KA-4323 Brass Pin Punch Set**

- 1/2" x 8" (13 x 200mm)



**KA-4326 Brass Taper Punch**

- 8" (203mm) Long, 5/8" hex-tapered to 3/8"



**KA-4327 Brass Bar Punch**

- 10" (254mm) Long, 3/4" diameter, chamfered both ends.



**KA-4324 Solid Brass Drift Punch Set**

- Heavy duty punches for rough jobs.
- Non-sparking solid brass won't damage object being struck.
- 5/8" x 8"



**KA-4325 Solid Brass Drift Punch Set**

- Heavy duty punches for rough jobs.
- Non-sparking solid brass won't damage object being struck.
- 3/4" x 14"



**KA-4328K Non-Sparking Brass Punches**

- Ideal for use where sparks from ferrous metal could be hazardous or where precision metal parts could be damaged by using steel punches. The ends of this soft brass punch will mushroom with normal use and should be redressed regularly.
- Includes an 8" punch (5/8" hex, tapered to 3/8") and 10" straight punch(3/4" dia., chamfered at both ends.)



**KA-4330K 3pc Solid Brass Drift Punch Set**

- Heavy duty punches for rough jobs.
- Non-sparking solid brass won't damage object being struck.
- Contents: 2 drift punches 5/8" x 8" & 3/4" x 14, one starter punch 3/4" x 10



**KA-4331K 3pc Solid Brass Pin & Drift Punch Set**

- Non-sparking solid brass punches designed to prevent damaged to the object being struck.
- Contents: one each 1/4" x 4" & 3/8" x 6" pin punch. 1/2" x 8" drift punch.



**KA-4329K 9pcs Non-Sparking Punches & Hammers Set**

**Contents:**

- Taper Drifts: 7/16"x14", 3/8"x8", 3/8"x10"
- Pin Punches: 1/4"x4", 3/8"x6", 1/2"x8", 3/4"x10"
- Beryllium Hammers: 1/2 lb (225gm), 1 lb (450gm)



**KA-4332K 3pcs Non Sparking Hammer & Punch Set**

- **Brass Punches**  
8" (203mm) Long, 5/8" hex-tapered to 3/8"  
10" (254mm) Long, 3/4" diameter, chamfered both ends.
- **Beryllium Hammers**  
Size: 1 lb (450mg) x 12-1/2"



**Beryllium Hammers**

**KA-4334** Size: 1 lb(450mg) x 12-1/2"

**KA-4335** Size: 1/2 lb (225mg) x 10-3/4"



Cross Pein



Vertical Pein

**Hammer**

Item No.	Type	L	W	Size
<b>KA-2138</b>	"K" type large head hammer – Cross Pein	346	116	Ø 30
<b>KA-2141</b>	"K" type large head hammer – Vertical Pein	346	116	Ø 30
<b>KA-2140</b>	Extra-large body hammer – Cross Pein	335	149	Ø 30
<b>KA-2139</b>	Extra-large body hammer – Vertical Pein	335	149	Ø 30



**KA-6050 Shrinkaging & Finishing Hammer**

- Special designed hammer surface profile which being with the performance of developing & conveying the sheet board.

**KA-3550**



 crowned face

**KA-3557**



 crowned face + curved Pein

**KA-3559**



 crowned face + straight Pein

**KA-3551, KA-3554**



 crowned face +  flat face

**KA-3552, KA-3553, KA-3555**



 crowned face +  flat face

**KA-3556**



 flat face +  milled square face

**KA-3558**



 flat face +  shrill milled square

Item No.	Name	Round Face	Square Face	Description
KA-3550	Pick & Finish Hammer	Ø 40mm	--	<ul style="list-style-type: none"> <li>■ Hammer head: medium carbon steel (1055C)</li> <li>■ Polish: mirror</li> <li>■ Handle: natural color hickory</li> <li>■ Surface finish: red painted</li> </ul>
KA-3551	Reverse Curve Hammer	Ø 30mm	27mm	
KA-3552	Standard Bumping Hammer	Ø 40.5mm	38mm	
KA-3553	Standard Bumping Hammer	Ø 40.5mm	38mm	<ul style="list-style-type: none"> <li>■ Head material: 1055 medium carbon steel</li> <li>■ Head polished: mirror polished</li> <li>■ Handle: octagonal shape natural color hickory handle</li> </ul>
KA-3554	Light Bumping Hammer	Ø 30mm	27mm	
KA-3555	Light Bumping Hammer	Ø 30mm	27mm	
KA-3557	Curved Pein & Finishing Hammer	Ø 40mm	--	
KA-3559	Straight Pein & Finish Hammer	Ø 40mm	--	
Item No.	Name	Round Face	Square Face	Description
KA-3556	Shrinking Hammer	Ø 40.5mm	38mm	<ul style="list-style-type: none"> <li>■ Head material: 1055 medium carbon steel</li> <li>■ Head polished: mirror polished</li> <li>■ Handle: octagonal shape natural color hickory handle</li> </ul>
KA-3558	Shrinking Hammer	Ø 40.5mm	38mm	



**KA-3561K 6pc Auto Body Repair Tool Set**



**KA-3560K 5pc Auto Body Repair Tool Set**

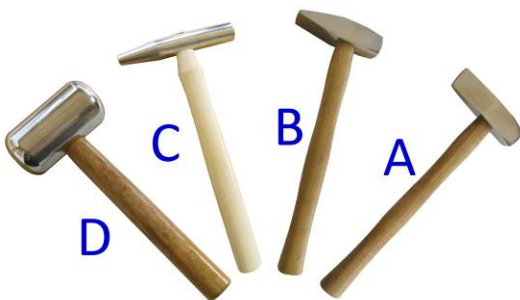


**KA-3562K 7pc Auto Body Repair Tool**

(Include: pick & finishing hammer, standard bumping hammer, light shrinking hammer, utility dolly, curved dolly, heel dolly, toe dolly)  
 Hammer head material: medium carbon steel (1055C)  
 Polish: mirror  
 Handle: natural color hickory  
 Hammer Head & Dolly: forged.

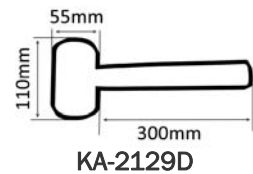
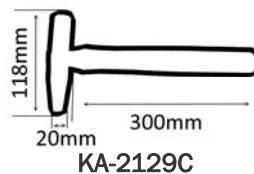
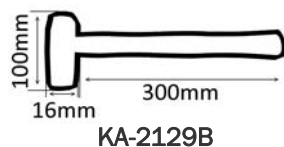
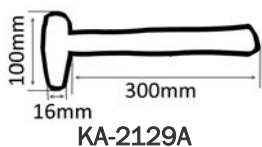


**KA-2146K 7pcs Bumping Hammer Kit**



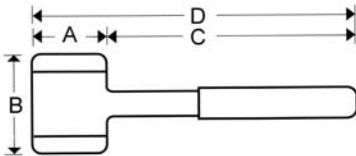
**KA-2129K 4pcs Hammer**

- Material: Aluminum alloy





**Replaceable Hammer (PU head)**



- Basic: include steel shot or not steel shot to choose. The strike face use PU materials.
- Materials: the holder use soft quality can recycle TPR.
- Feature: the both strike face can repeat change if break.
- Hardness: have three hardness (60D、65D、70D)

Model	A	B	C	D	Weight	Weight	
KT-5110	30	105	255	285	480g	480g	16oz
KT-5111	35	110	255	290	590g	590g	20oz
KT-5112	40	120	260	300	850g	850g	29oz
KT-5113	45	120	260	305	990g	1100g	38oz
KT-5114	50	125	265	315	1110g	1220g	42oz
KT-5115	55	135	265	320	1290g	--	43oz
KT-5116	60	140	265	325	1670g	--	58oz

**Hammer Adjusters**



- Basic: steel structure and include steel shot.
- Materials: the strike face have PU materials and Pure copper materials.
- Feature: the design fit to attack the any position, strike face can repeat change.
- Hardness: PU strike face (60D、65D、70D)  
Pure copper strike face (pure copper 99.9%)
- Application: Machine tool, lathe, milling machine, combined, maintenance factory, repair machine.

**Hammer-Adjusters (Pure copper strike face)**

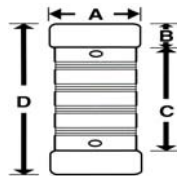
Model	A	B	C	D	Weight
KT-C5025	25	14	110	138	515g
KT-C5030	30	17	120	154	840g
KT-C5035	35	18	131	167	1060g
KT-C5040	40	21	136	178	1500g
KT-C5045	45	25	140	190	1980g

**Hammer-Adjusters (PU strike face)**

Model	A	B	C	D	Weight
KT-P5025	25	18	110	146	410g
KT-P5030	30	18	120	156	650g
KT-P5035	35	20	121	161	710g
KT-P5040	40	21	126	168	940g
KT-P5045	45	21	130	172	1200g
KT-P5050	50	21	140	182	1440g

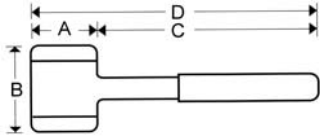
**Replace the pure copper strike face**

	<p><b>Take out the strike face</b> Use the hit pin and hammer to beat the fix pin, the bad strike face will take off</p>
	<p><b>Install the strike face</b> Make up the hole by new strike face and adjusters-hammer. Use the hammer to beat the fix pin to fixed new strike face.</p>



**Replace PU strike face**

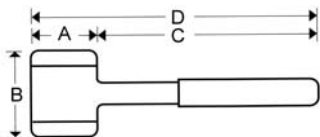
	<p><b>Take out the strike face</b> Use the VEST to shock both side the bad PU face, the bad strike face will take of.</p>
	<p><b>Install the strike face</b> Press the new PU face into the adjusters-hammer. Use hammer to beat the PU face and fixed.</p>



**Heavy-Duty Hammers**

- Basic: steel structure and include shot.
- Materials: 1) NBR synthetic plastic head  
2) PU-liquid head with fiberglass handle and TPV grip.
- Feature: 1) octagonal head design for easy to put and stand.  
2) the whole use of fiberglass, effect on avoid break the best.  
3) have 2 material to choice(NBR/PU)
- Hardness: hardness of NBR hammer (83A~86A)  
hardness of PU hammer (90A~95A)

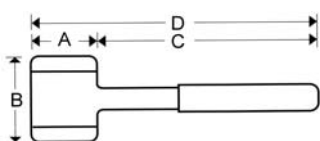
Model No.	A	B	C	D	Weight
KT-E10P	100	200	810	910	±5.5KG
KT-PU10P	105	198	805	910	±5.5KG



**E-Hammers**

- Basic: steel structure and include shot.
- Materials: NBR synthetic plastic head & handle with TPV grip.
- Feature: 1) the neck pick the circle arc and adds neck thick design, enhancement of product streamlining with sturdiness.  
2) the product surface have pattern design, increase the product artistic and the purchase desire.  
3) the attack head have show  $\triangle$  design the main of instruction rubber thickness on attack surface and increases lively feeling.
- Hardness: hardness of NBR hammer (83A~86A)

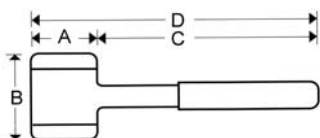
Model No.	A	B	C	D	Weight
KT-E50Q	50	100	270	320	795g



**N-Hammers**

- Basic: steel structure and include shot.
- Materials: main of the synthetic plastic NBR. The holder use soft quality TPR.
- Feature: the neck use color of fluorescence(P.P) can conspicuous and easy to find, any color as you choose
- Hardness: hardness of NBR hammer (83A~86A)

Model No.	A	B	C	D	Weight	
KT-N050	50	110	290	340	940	33oz



**PU-Hammers**

- Basic: steel structure and include shot.
- Materials: main of the anti-pollution PU-liquid. The holder use soft quality TRP.
- Feature: PU hammer have many color to choice. PU not make with heavy-metal and dioxin when burning.
- Hardness: hardness of PU hammer (90A~95A)

Model No.	A	B	C	D	Weight	
KT-PU050	50	110	290	340	940g	33oz



**KA-6723K**

**KA-6723K KA-6723KA**  
**4pcs Heavy Duty Professional Pry Bar (CR-MO)**

- (1) KA-6723-1 (KA-6723KA-1) STRAIGHT 16 x 915mm
- (2) KA-6723-2 (KA-6723KA-2) 30° ANGLE 16 x 905mm
- (3) KA-6723-3 (KA-6723KA-3) 90° ANGLE 16 x 615mm
- (4) KA-6723-4 (KA-6723KA-4) 70° ANGLE 16 x 615mm



**KA-6723KA (different handle)**



**KA-6101 4pcs Pry Bar Set**

- Drop forged
- Fully heat-treated
- Size: 8"(200mm), 12"(300mm), 18"(450mm), 24"(600mm)



**KA-6101A 4pcs Mechanic's Pry Bar Set**

- CR-V steel shanks, tempered and black oxide finish.
- Through-handle square shank with capped end.
- Dual-component composite, texture handle.
- Size: 1/4" x 8", 3/8" x 12", 7/16" x 18", 7/16" x 24"
- Blade: CR-V
- Handle: PP + TPR



**H/D Pry Bar (CRV)**

Forged these bars from chrome alloy steel, then heat-treated them to resist bending and breaking.

- KA-2422A** 5/8" diameter, 18" long. (450mm)
- KA-2422B** 3/4" diameter, 24" long. (600mm)
- KA-2422C** 7/8" diameter, 30" long. (750mm)
- KA-2422D** 7/8" diameter, 46" long. (1150mm)
- KA-2422E** 1" diameter, 54" long. (1350mm)



**KA-2420 Pry Bar**

- 445mm (17.5")



**8 - in -1 Indexable Ratchet Pry Bar**

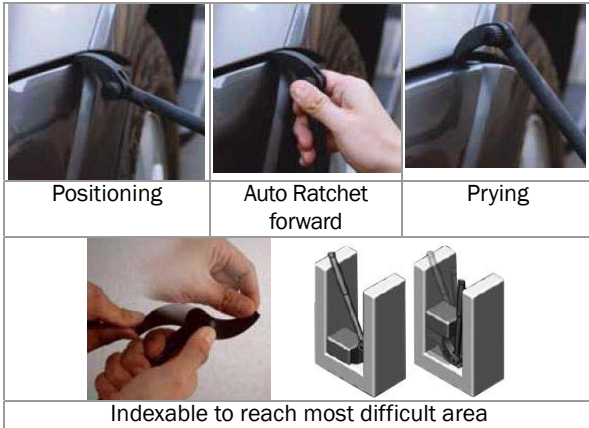
An adjustable prying bar includes a prying head having an accurate body. Thereby, the angle between the prying head and the handle enables to adjust for larger or smaller than 90 degrees.

**Product Features:**

- Adjustable head allows you to choose up to 8 different angles
- Auto forward LOCKING ratchet design mechanism
- Exceeds ANSI requirements for proven strength
- High leverage gear design provides maximum leverage while lifting and pulling back
- Industrial Magnese Phosphate finish to helps protect against corrosion

**Application:**

- Prying: diesel injectors, seals, bearings, oil pans, axles, fuel injectors, and pulling things apart in many body shop applications
- Breaking Loose bell housing from Engine Block and transmission
- Aligning sheet metal
- Removing molding



Item No.	Length (inch)	Description
KA-IRPB-10	10	10 inch indexable ratchet pry bar
KA-IRPB-12	12	12 inch indexable ratchet pry bar
KA-IRPB-15	15	15 inch indexable ratchet pry bar
KA-IRPB-3	10,12,15	All 3 pcs in PVC tray & Color Box

**1/2" Dr. Pry Bar Adaptor**

**Product Features:**

- Adjustable head
- With 36, 48, or 72 teeth Dr. Auto forward LOCKING ratchet design mechanism
- Pry Bar Head Exceeds ANSI requirements for proven strength
- High leverage gear design provides maximum leverage while lifting and pulling back
- Industrial Magnese Phosphate finish to helps protect against corrosion

**Application:**

Prying: diesel injectors, seals, bearings, oil pans, axles, fuel injectors, and breaking Loose bell housing from Engine Block and transmission



Item No.	Length	Description
KA-PBA-0	7mm	1/2" x 7mm Blade Tip Width Pry Bar Adaptor
KA-PBA-1	11mm	1/2" x 11mm Blade Tip Width Pry Bar Adaptor
KA-PBA-1	15mm	1/2" x 15mm Blade Tip Width Pry Bar Adaptor
KA-PBA-3	7,11,15mm	All 3 pcs in Double Blister Card



**KA-2723 3/8" Dr. Pry Bar Head**

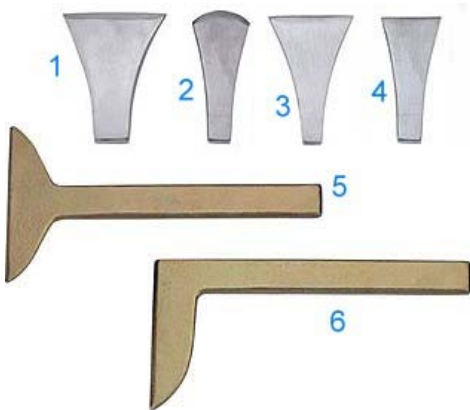
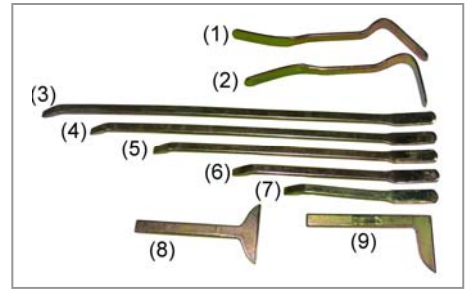
This adapter gives you the versatility of a pry bar without the storage problems! Turn any 3/8" drive ratchet or breaker bar into a rolling head pry bar, then just disassemble and toss in your tool box when you're done.



**KA-6120K 9pc Heavy Duty Professional Pry Bar Set**

**Content:**

- **PRY BAR (CRV)**
  - (1) KA-6108A 380mm
  - (2) KA-6109A 380mm
  - (3) KA-6107A 900mm
  - (4) KA-6106A 750mm
  - (5) KA-6105A 600mm
  - (6) KA-6104A 450mm
  - (7) KA-6103A 300mm
- **Bumping Chisel (CRV)**
  - (8) KA-6056A 260 x 130mm
  - (9) KA-6057A 260 x 140mm



**Body Wedge Tool**

	Item No.	Model	Width	Length
1	KA-6051	LARGE	70	110
2	KA-6053	ROUND	35	110
3	KA-6054	FLAT	70	110
4	KA-6055	INCH	35	110
5	KA-6056A	T TYPE	130	260
6	KA-6057A	L TYPE	140	260



**KA-2146-10**

- 65 x 30mm Multi-Dolly
- Blister Card Package



**KA-2146-11**

- 100 x 42mm Multi-Dolly
- Blister Card Package



**Bumping Blocks / Tools**

Item No.	Description	L	W	H	g
KA-2146-1	Twin flat, thin	87	50	25	600
KA-2146-2	Twin flat, thick	96	52	32	900
KA-2146-3	Flat, Semi round thin	90	55	25	600
KA-2146-4	Flat, Semi round thin	90	60	33	900
KA-2146-5	Toe shape	118	65	19	700
KA-2146-6	Roof wedge	120	50	38	800
KA-2146-7	Baquet	73	37	59	700
KA-2146-8	Anvil type - cule	62	51	70	900
KA-2146-9	Anvil type - megaly	72	54	26	540

**Dolly Kit**

- Head material: 1055 medium carbon steel
- Mirror polish head

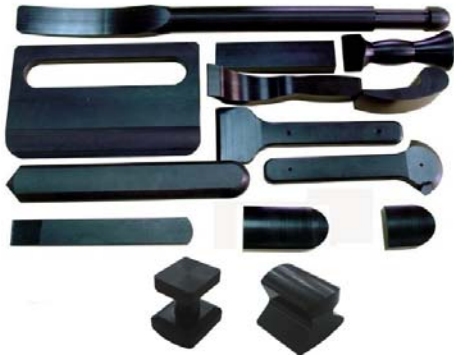


Item No.	Description	L (mm)	W (mm)	H (mm)
KA-3529	Angle Dolly (sand-blasted finish)	109	59	17
KA-3530	Thin Toe Dolly (sand-blasted finish)	118	55	24
KA-3531	Grid Dolly (red painted finish)	122	59	29
KA-3532	Double End Hand Dolly (red painted finish)	66	61	74
KA-3533	Utility Dolly (red painted finish)	75	73	66
KA-3534	Curved Dolly (red painted finish)	80	58	70
KA-3535	Anvil Dolly (red painted finish)	102	72	62
KA-3536	Pound Peen End Dolly (sand-blasted finish)	125	54	44
KA-3538	Double End Round Dolly (sand-blasted finish)	56	--	58
KA-3539	Large End Dolly (sand-blasted finish)	125	90	70
KA-3544	Curved Dolly (red painted finish)	132	58	45
KA-3545	Heel Dolly (sand-blasted finish)	78	60	30
KA-3546	Toe Dolly (sand-blasted finish)	120	58	29
KA-3547	Shrinking Dolly (sand-blasted + red painted finish)	120	58	29
KA-3548	Drip Moulding Spoon (blue painted)	236	--	49
KA-3537	Light Dinging Spoon (black painted)	250	--	50.8 x 109
KA-3540	Flat Spoon (light duty type, sand-blasted finish)	250	--	29.5
KA-3541	Double Blade Spoon (black baked paint finished)	401	58	--
KA-3542	Double Blade Spoon (black baked paint finished)	510	59	--
KA-3543	Flat Spoon (light duty type, sand-blasted finish)	286	51	--



**KA-7249K 7pcs Rubber Dolly Kit (Metal + Rubber Coating)**

- 1. Long Type Curved Dolly.....900g
- 2. Curved Dolly.....930g
- 3. Utility Dolly.....960g
- 4. Long Type Heel Dolly.....650g
- 5. Double End Hand Dolly.....850g
- 6. Heel Dolly.....370g
- 7. Double End Dolly.....1500g



**KA-2890K 13pcs Body Beating Tools**

- Made of resistant POLYACETALE
- A complete set for all the body bumping tasks.
- For light or strong sheet metal jobs, large surface or small space bumping tasks.



**KA-4319 Round Head Chisel Nylon Dolly**

- Long Handle
- A great tool for doors, fender, hoods.
- Tough nylon material with long handle. The blade chisel head works wonder for edge, narrow openings , narrow space.
- A great tool for reform the damaged panels.
- Head:3. 1/2"(95mm)
- Length: 11"(280mm)
- Weight: 0.305kg



**KA-4320 Bolster Head Nylon Dolly**

- Edges-alignment tool
- Great tools for doors, fender, hoods.
- Tough nylon material with long handle. The blade chisel head works wonder for edge, narrow openings , narrow space.
- A great tool for reform the damaged panels.
- Head: 3.1/2"(95mm)
- Length: 11"(280mm)
- Weight: 0.35kg



**KA-7235 Double End Nylon Dolly**

- A special tool for hand holding and for bumping out the curved outlines. Strong and tough nylon material with round head and wedge head on either end. Great for lighter sheet metal panels or a cushioning effect to match the weight of the hammer without stretching the metal.
- Round end: 2.3/4"(70mm)
- Wedge end: 2.1/2"(65mm)
- Length: 7"(180mm)



**KA-2890A Lever system things and bumping out tool**

- Specially designed for hard-to-reach spaces.
- Such as fender, truck lids, doors.
- L: 710mm
- W: 51mm
- Weight: 1.235kg



**KA-2890B Profile arranging block**

- A great tool works strongly for fine works, full impact force for curve lines, or pointed spaces, sheet metals or large surface.
- L: 263mm
- W: 40mm
- Weight: 0.28kg



**KA-2890C Crease alignment tool**

- A great tools for crease. Also for hood truck flap.
- L: 260mm
- W: 28mm
- Weight: 1.16kg



**KA-2890D Hand fist flat & curved**

- Bumping out the round spaces, large surfaces or edges.
- L: 194mm
- W: 50mm
- Weight: 0.325kg



**KA-2890E Curved & Bumping Tool**

- L: 247mm
- W: 56mm
- Weight: 0.355kg



**KA-2890F Round & Flat Tool**

- L: 140mm
- W: 65 & 45mm
- Weight: 0.335kg



**KA-2890G Square edges chisel tool**

- Suitable e.g. for Opel, Ford, DB, BMW etc.
- Length: 300mm
- Height: 150mm
- Strength: 20mm



**KA-2890H 2 Way Round Block**

- L: 7mm
- W: 71 & 50mm
- Weight: 0.34kg





**KA-2890L**  
I – Shape Body Tool



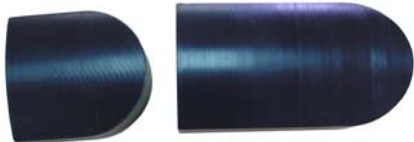
**KA-2890-3 3pcs Bumping Out Set**

- Content:**  
 KA-7235 Double End Nylon Dolly  
 KA-2880D Hand Fist Flat & Curved Dolly  
 KA-4320 Bolster Head Nylon Dolly



**KA-2351 2pcs Steel Bumping Tool W/Rubber Coat**

- Made with steel core/interior.
- Specially design for working on Steel bodies, Aluminum bodies, firm metal or thin metal sheet. A great tool to stretch or shrink the sheet metal.
- Great tools for door sheet metal, trace widening and direct bumping out tasks.
- KA-2351 is made of solid steel with rubber coating. So full surface is useable to perform the bumping tasks.
- A great companion for KA-7817 or other sort of “Dry Dent Repair” (Paintless Dent Repair tasks)



**KA-2351N 2pcs Polyacetale Block Set**

- L: 121 & 70mm
- W: 65mm
- Weight: 0.4 & 0.215kg



**KA-6685 Rubber Heel Dolly**

- Weighted hard rubber to match weight of hammer.
- Rubber coating provides cushioning effect.
- Works easily in sharp comers and wide radii.
- Also works well on new, thinner sheet metal.
- Moves the metal rather than stretching it.



**KA-2890FR Rubber Wedge Dolly**

- Long, slender general-purpose rubber dolly.
- This rubber dolly is very useful and popular in working behind reinforcements.
- The long, thin lip design gives the work easier and more convenient.

**KA-3530R Rubber Toe Dolly****(rubber coating)**

- Great for flat surfaces and use on thin sheet metal.
  - It has all the features of a toe dolly but lighter in weight.
- 

**KA-3531R Rubber Shrinking Dolly (Serrated-Faced)****(rubber coating)**

- Toy dolly shape but one face covered with raised serrations for shrinking metal stretched by dents.
- 

**KA-3532R Rubber Double End Hand Dolly****(rubber coating)**

- This dolly is ideal for deep, skirted fenders and shrinking when using heat.
  - Double end hand design fits hand with better control and also gives this dolly wide general use
- 

**KA-3533R Rubber General Purpose Dolly****(rubber coating)**

- It provides convenient and comfortable handhold during heaviest blows.
  - Weight, balance and several differently crowned working faces; two beading and flange lips design allows this dolly broad general use.
- 

**KA-4188 Rubber Crown-Shape Dolly****(Rubber coating)**

- Weighted hard rubber to match weight of hammer.
  - Rubber coating provides cushioning effect.
  - The crown-shape design provides different curves and angles.
- 
- 
-

The plastic wedges are particularly suitable for body work such as removing and installing trim strips, door trims, door clips etc...

Picture	Item No. / Name	Measure (mm)	Weight (g)
	KA-1290-1 Plastic Wedge	200 x 20 x 25	75
	KA-1290-2 Combined Wedge Trims	210mm	90
	KA-1290-3 Plastic Wedge with Felt	250 x 19 x 25	75
	KA-1290-4 Plastic Wedge with Straight and Angled Tip	250 x 20 x 10	35
	KA-1290-5 Plastic Wedge Angled with Cutout and Pin (For door clips)	225 x 22 x 8	55



**KA-1291K 4pcs Plastic Wedges Set**

- Contents: KA-1290-1, KA-1290-3, KA-1290-4, KA-1290-5
- Packing: Slid Card



**5pcs Plastic Wedges Set**

- Contents: KA-1290-1, KA-1290-2, KA-1290-3, KA-1290-4, KA-1290-5

**KA-1290K** Packing: Slid Card

**KA-1290KP** Packing: Pouch Bag





Hand Sanding Board – 80mm x 150mm  
KA-2973 (VINYL)  
KA-2973A (VELCRO)



HAND SANDING BOARD Dia. 6"  
KA-2974 (VINYL)  
KA-2974A (VELCRO)



Hand Sanding Board – 70mm x 135mm  
KA-2975 (VINYL)  
KA-2975A (VELCRO)



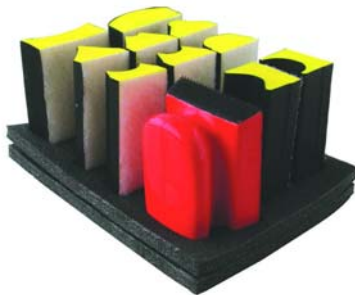
Hand Sanding Board – 70mm x 440mm  
KA-2976 (VINYL)  
KA-2976A (VELCRO)



Hand Sanding Board – 70mm x 440mm  
KA-2977 (VINYL)  
KA-2977A (VELCRO)



Hand Sanding Board – 70mm x 102mm  
KA-3491 (VINYL)  
KA-3492 (VELCRO)



KA-1227  
11pcs Hand Sanding Pad Kit



KA-1228  
Sanding Board (75mm(W) x 130mm(L))



KA-1229  
20pcs 4" Plastic Spreader Set



KA-1230  
3pcs Plastic Spreader Set 2-1/2", 4", 5"



### KA-1622 Car Care Eraser

**Feature:**

- It can remove hard grain ash, asphalt, insect stain on car surface
- It can remove the thin coating of sprayed painting
- To prevent the harm of car painting from bumble wax or useless detergent.
- It can save cleaning time, money and keep the car surface shining.

**Usage:** Cleaning the car first

1. Direct wipe: for light coherence
2. Wipe with water: for heavy coherence. When the direct wipe is in vain, choose this way. Such as dry & hard insect.
3. Wipe with diluted soap water: Match with diluted soap water to clean the serious coherence.
4. Please often wiper this eraser surface clean by wet towel during working



### KA-2683 Kneeling Pads

- Size: 14" x 21"
- Material: NBR
- No crosswalk

### KA-2683-L Kneeling Pads

- Size: 16" x 28"
- Material: NBR
- Crosswalk



### KA-1239 Kneeling Pads

- Size: 40 x 18 x 2cm
- Material: EVA

### KA-1239-L Kneeling Pads

- Size: 30 x 15 x 1.5cm
- Material: EVA



**KA-6378**  
**3 Way Scraper**



**KA-2407 Window Scraper**  
 ■ L: 170mm



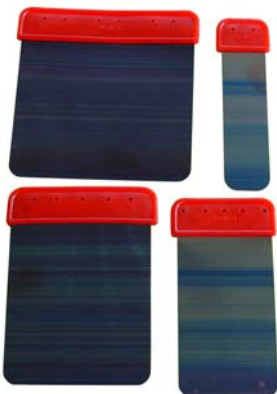
**Super Razor Scraper**  
**KA-6110A** 10"  
**KA-6110B** 8"



**KA-6506 Gasket Scraper**  
 ■ Used for a variety of scraping needs  
 ■ Comfort grip handle  
 ■ Chrome plated blade



**Tungsten Carbide Scraper**  
 Turn blade over for three additional surfaces for a total of six possible cutting edges.  
**KA-4293** 15mm  
**KA-4293A** 20mm



**Auto Body Filler Applicators Set**  
**KA-6666A:** 1"-2"-3"-4" 4pcs/set  
**KA-6666B:** 4" x 3pcs/set  
**KA-6666C:** 6" X 2pcs/set  
**KA-6666F:** 1/2"-1"-2"-3" 4pcs/set



**KA-6666G**  
 4" x 5pcs/set



**KA-2350 2pc Super Scrapers**

To easily scrape off emblems and stickers.  
Hard plastic and polypropylene razor blade that won't damage the surface



**KA-5548K 3pc Scraper Knife Set**

KA-5548 Scraper knife (w:15mm)  
KA-5549 Scraper knife (w:20mm)  
KA-5550 Scraper knife (w:30mm)



**KA-2408 4pc Multipurpose Scrapers Set**

- 2pc-8" length
- 2pc-12" length
- This set includes a select on of multipurpose scrapers ideal for a variety of general automotive applications.
- 3M Imperial wetordry paper AWt.
- Short blades ideal for scraping hard-to-reach carbon deposits.
- Long blade use to scrape engine blocks and heads.
- Rigid carbon scrapers.



**KA-6111 5pc Scraper & Remover**

- 1pc 9"(225mm) cotter pin puller
- 1pc 8"(200mm) scratch awl
- 1pc 7"(178mm) radiator hose remover
- 1pc 8-1/4"(209mm) multi-purpose scraper, blade 19mm wide.
- 1pc 11"(275mm) multi-purpose scraper, blade 25mm wide.
- Hardened and temper high carbon steel blade, black oxide finish.



**KA-4370 4pc Super Scraper**

Works Like a Chisel

- Tough plastic handle can be hit with a hammer!
- Resharpen when needed with a file!
- Sizes: 3/4", 7/8", 1", 1-1/2"

ITEM NO	SIZE	LONG
KA-4370-1	3/4"(19mm)	10-3/4"
KA-4370-2	7/8"(22mm)	10-3/4"
KA-4370-3	1"(25mm)	10-3/4"
KA-4370-4	1-1/2"(38mm)	10-3/4"



**KA-7371-1 Impact Scraper (Cr.V)**

- 3 1/2" x 7"



**KA-7370 Impact Scraper (Cr.V)**

- 2 1/2" x 12"



**KA-4376 6pcs Heavy Duty Pin Punch Set**

- Size: 1.7, 2.7, 3.7, 4.7, 5.7, 7.7 mm



**KA-4377 5pcs Heavy Duty Pin Punch Set**

- Size: 3, 4, 5, 6, 8 mm



**KA-4378 4pcs Heavy Duty Pin Punch Set**

- Size: 10, 12, 14, 16 mm



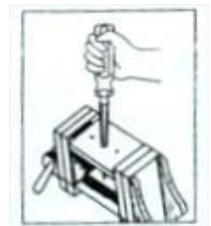
**KA-4379 4pcs Heavy Duty Chisel Set**

- 3PCS Flat Chisel: 15, 20, 25 mm
- 1PC Cape Chisel: 10mm



**KA-5074 Tapered Reamer**

- Tool reams as well as deburrs. Aligns and enlarges holes 1/8 to 1/2" in diameter.
- Accurately ground tempered "steel tool" with 3-1/2" blade. Always turn clockwise and use cutting oil for best results.



**Tapered Reamer (for reaming)**

- T-handle for easy turning
- For reaming, debarring and enlarging holes.
- Heat-treated, high-grade steel for maximum strength and durability.

<b>KA-6437</b>	4 ~ 22mm	<b>KA-6437-1</b>	4 ~ 31mm
<b>KA-6438</b>	3 ~ 13mm	<b>KA-6438-1</b>	4 ~ 31mm
<b>KA-6439-3</b>	1 ~ 12mm	<b>KA-6440-4</b>	1 ~ 13mm
<b>KA-6441-5</b>	1 ~ 16mm	<b>KA-6442-6</b>	1 ~ 22mm
<b>KA-6443-7</b>	3 ~ 22mm		



**KA-7799 Automatic / Sheathed Center Punch**

- By rotating the end, the impact capacity could be adjusted from 15 kg to 25 kgs.
- Hardened / Tapered tip to 57-60HRC
- To release / initiate the impact, just press the end of the punch tool.



**KA-5554 Straight Type Impact Scraper**  
**KA-5555 Bent Type Impact Scraper**

- L: 700mm x HEX 16mm





**KA-5553 Straight Type Sliding Hammer Pry Bar**

- Size: 600mm(L) x 12mm(Hex)
- Material: CRV, W/Satin Finished

**KA-5553-1 Bent Type Sliding Hammer Pry Bar**

- Size: 700mm(L) x 16mm(Hex)
- Material: CRV, W/ Satin Finished



**KA-5553-2 Sliding Hammer Pry Bar**

- Size: 700mm(L) x 16mm(Hex)
- Material: CRV, W/ Satin Finished



**KA-5556 75mm Sliding Hammer Scraper**

- Size: 630mm(L) x 16mm(Hex); Color: black

**KA-5557 75mm Sliding Hammer Scraper**

- Size: 630mm(L) x 16mm(Hex)
- Material: CRV, W/ Satin Finished



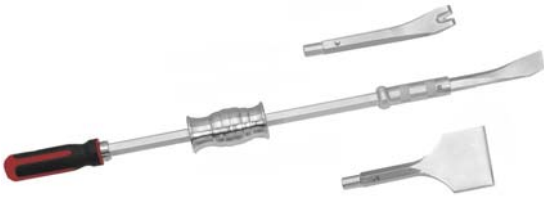
**KA-5558-A Multi-Function Slide Tool Clamp**

- Material : SCM440
- SIZE : 16mm x 740mm



**KA-5558-B 4-IN-1 Multi-Function Tool Kit**

- 1pc - Clamp Tool 16mm x 740mm(SCM440)
- 1pc - Chisel 16mm x 185mm x 27mm (CRV6150)
- 2pc - Scraper 16mm x 185mm x 75mm (CRV6150)



**KA-5558-C 3-IN-1 Multi-Function Tool Kit**

- 1pc - Chisel 16mm × 185mm × 27mm
- 1pc - Nail Puller 16mm × 185mm × 27mm
- 1pc - Scraper 16mm × 185mm × 75mm
- Material : CRV6150



**KA-5558-D 7-IN-1 Multi-Function Tool Kit**

- 2pc - Center Punch (16mm × 5mm) (16mm × 6mm)
- 2pc - Chisel 16mm × 185mm × 27mm
- 2pc - Scraper 16mm × 185mm × 75mm
- 1PC - Nail Puller 16mm × 185mm × 27mm
- Material : CRV6150



**KA-5558-G 7-IN-1 Multi-Function Tool Kit**

- 1pc - Scraper 16mm × 185mm × 75mm (CRV6150)
- 1pc - Slide Hammer Hook
- 2pc - Chisel 16mm × 185mm × 27mm(CRV6150)
- 3pc - Rear Axle Bearing Puller
- Size: 1", 1 <sup>7</sup>/<sub>8</sub>" , 1 <sup>5</sup>/<sub>16</sub>" , 2 <sup>3</sup>/<sub>8</sub>" , 1 <sup>3</sup>/<sub>8</sub>" , 2 <sup>7</sup>/<sub>8</sub>" (SCM 4140)



**KA-5558-H 7-IN-1 Multi-Function Tool Kit**

- 2pc - Chisel 16mm × 185mm × 27mm(CRV6150)
- 4pc - Bearing Hole Puller (SCM440)
- Size: 10-14 mm 15-19 mm 18-25 mm 25-32 mm
- 1pc - Scraper 16mm × 185mm x 75mm(CRV6150)



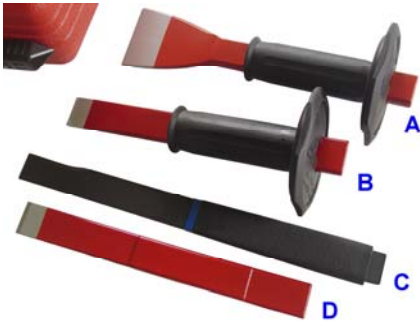
**KA-5558-J 3-IN-1 Multi-Function Tool Kit**

- 1PC- <sup>11</sup>/<sub>16</sub>" TIE ROD
- 1PC- <sup>15</sup>/<sub>16</sub>" BALL JOINT
- 1PC- 1 <sup>1</sup>/<sub>8</sub>" PITMAN ARM
- Material : SCM45°



**KA-5558-K 6-IN-1 Multi-Function Tool Kit**

- 1pc -Scraper 16mm × 185mm x 75mm(CRV6150)
- 2pc -Chisel 16mm × 185mm × 27mm(CRV6150)
- 1PC- <sup>11</sup>/<sub>16</sub>" TIE ROD ( SCM45°)
- 1PC- <sup>15</sup>/<sub>16</sub>" BALL JOINT ( SCM45°)
- 1PC- 1 <sup>1</sup>/<sub>8</sub>" PITMAN ARM ( SCM45°)



**KA-5081K 4pcs Chisel Set**

KA-5081A	Chisel with holder	Blade: width 60mm Thickness: 11mm L: 245mm
KA-5081B	Chisel with holder	Blade: width 26mm Thickness: 7mm L: 230mm
KA-5081C	Chisel (KA-2916-FLAT)	Blade: width 23mm Thickness: 6mm L: 298mm
KA-5081D	Chisel	Blade: width 26mm Thickness: 7mm L: 230mm



**KA-6405 Body Shop Supplies Specialist**

- 16" Plastic Sanding Board



**KA-6859 Curved Tooth/File Holder**

- Holds 350mm flat, flexible files only
- Adjustable frame



**KA-3549 Auto Body File (red painted) w/blade**

- Hand: Aluminum Alloy



**KA-6039 Sanding Block**

- 1/4" x 2" x 3" Black Rubber
- Sad irregular, slat and curved surfaces.
- Great for water sanding, feather-edging and spot putty.



**KA-5244 Sanding Block**

- 88.3mm x 85.2mm x 9.5mm Black Rubber.
- Sad irregular, slat and curved surfaces. Great for water sanding, feather-edging and spot putty.



KA-7660



KA-7660P

- High power magnet to hold the impact wrench & socket.
- Put on the tool chest or to pole lifter to hold the impact wrench.

**KA-7660**  
**Tool Hold With Two Magnetic Pad (Metal)**

- Capacity: 15 kgs

**KA-7660P**  
**Tool Hold With Two Magnetic Pad (POLYA CETATE)**

- Capacity: 21kgs



**KA-7819 Magnetic Holder For Impact Wrench (iron + iron oxide)**

CAPACITY: 15kgs

**FUNCTION:**

1. This magnetic holder is designed for holding most pistol type impact wrenches and impact sockets.
2. Special magnetic structure can firmly attach to ferric surface up to 15 lbs.
3. The magnetic holder can easily hold one impact wrench, four impact sockets, and other tools, like screwdrivers.
4. With PE coating finishing, this magnetic holder is environmental compliance.
5. Screw-holes design, you can screw the holder on nonferrous surface (two screws included).
6. Wire hook for organize air hoses or electric wire.



**KA-2871 Simple Magnetic Impact Wrench Holder**

- Capacity: 2.7 kgs



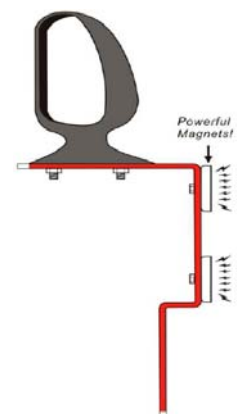
**KA-7660S All Plastic Magnetic Impact Wrench Holder**

- Capacity: 8.1kgs



**KA-7660A Side View Mirror Holder**

- Spray and dry odd-shaped trim and wing mirrors quickly and easily.
- Fix trim to spray-aid and hand-hold to spray.
- Then fix to wall in spray-booth to dry using two strong magnets.





**KA-7795K 5pcs Drift Punch Set**

- Ø 25 and 30 mm
- 1 pc- anti-vibration sheathed handle
- 2 pc- brass tips Ø 25 and 30 mm – effective length: 40mm
- 2 pc- polyamide tips Ø 25 and 30 mm – effective length: 40mm



**KA-7796K 15pcs Drift Punch Set**

- Capacity: Ø 3 to 8 mm
- 1 pc- anti-vibration sheathed handle
- 5 pc- steel nail tips Ø 3 to 8 mm – effective length: 40 to 65mm
- 5 pc- steel drift punch tips Ø 3 to 8 mm –effective length: 40 to 65mm
- 4 pc -brass tips Ø4 to 8 mm – effective length: 20 mm



**KA-7797K 19pcs Drift Punch Set**

- Capacity: Ø 10 to 20 mm
- 1 pc- anti-vibration sheathed handle
- 5 pc- steel tips Ø 10,12,14,16,18mmeffective length: 60mm
- 3 pc- brass tips Ø 12,16,20 mm – effective length: 40mm
- 3 pc- brass extension tips Ø 12,16,20 mm –effective length: 20mm
- 3 pc- polyamide tips Ø 12,16,20 mm – Length: 40mm
- 3 pc- polyamide extension tips Ø 12,16,20 mm – effective length: 20mm
- 1 pc- extension 217.R12, effective length 100mm



**KA-7798 Welded Hinges Door Removal Tool**

- Works for removing both solid and hollow hinge pins of welded door hinges.
- Works for all cars with welded door hinges.
- Door Spring Removal Tool included.



**KA-7801 Ratchet Wrench for Door Hinge Bolt**

14 x 14x 6P



**Ratchet Wrench for Door Hinge Bolt**

**KA-7801A** 12 X 12 X 12 PT

**KA-7801B** 14 X 14 X 14 PT

PA-898 / PA-898K Air Automatic Hammer is a unique type of tool, it is not like regular Air Hammer which is for stamping the nails. Our PA-898 / PA-898K is versatile. By using different hammer tip, use it on Car Body Repair, Furniture Assembling, Installation and all sort of jobs that you use with regular hammer.

PA-898 / PA-898K hit 1000 blow per minute, this speed is incomparable by our bare hands. With 1000 blow per minute, it makes all the jobs quicker and easier and also labor-saving.

PA-898 / PA-898K is made with Japan-standard with the quality that you could rely on.



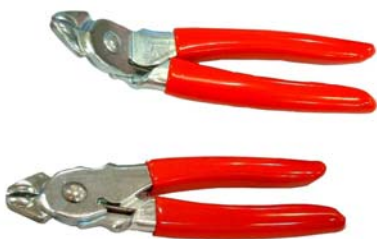
**PA-898 Air Automatic Hammer**

- Include two hammer head.  
Medium Soft Plastic Hammer Head.  
Aluminum Hammer Head
- Weight: 2 Lbs (1 kg)
- Height: 3-5/8"
- Air Consumption: 2-4 CFM
- Hammer Tip: 1-1/2" diameter.
- Blow Per Minute: 1000 BPM
- Operating Pressure: 30 - 125 PSI



**PA-898K Air Automatic Hammer Kit**

- Include six hammer tip:  
Super Soft Plastic Hammer Head  
Soft Plastic Hammer Head  
Medium Plastic Hammer Head  
Hard Plastic Hammer Head  
Aluminum Hammer Head  
Steel Hammer Head
- Weight: 2 Lbs (1 kg)
- Height: 3-5/8"
- Air Consumption: 2-4 CFM
- Hammer Tip: 1-1/2" diameter.
- Blow Per Minute: 1000 BPM
- Operating Pressure: 30 - 125 PSI



**KA-7804K 2pcs Hog Ring Fastener Plier Set**

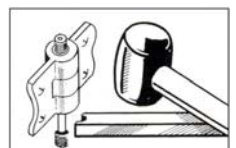
- Great pliers for upholstery jobs on all vehicles.
- Design for installing Hog Ring fasteners
- Gripping Hog Rings for closure.
- Pliers loaded with spring to hold the hog ring in jaws while using.
- Cushioned grip handle for comfort use.

**KA-7804A** 45° Hog Ring Fastener Ring Pliers  
**KA-7804B** Straight Hog Ring Fastener Ring Pliers



**KA-9019 Door Pin Extractor**

- For the easy removal and replacement of door hinge pins. Choose the correct punch for the door hinge.
- Remove the threaded end cap. Slide the punch upwards through hinge and screw back the end cap. Fit the cranked handle onto the punch using the slotted end and tap gently with a mallet to draw out the pin.





**KA-4316 Door Jammer**

- Holds door open while you hammer, pull grind, sand or paint.
- For door and deck lids
- Fits any size latch.



**KA-6961K Euro Door Hinge/Handle Kit**

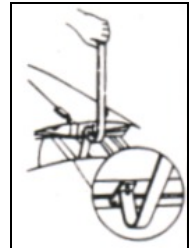
Finally, a compact solution to accessing the special fasteners found on the door hinges & door HANDLES OF VW/AUDI, MERCEDES-BENZ and PORSCHE. Includes 4 door hinge bits (less than 1 inch long) with slender ratcheting wrench and extra long drivers for accessing MERCEDES and VW door handle fasteners.



**KA-6426 Door Adjuster**

Simply slide pin end of tool into door latch and close door until tool engages door striker. Now raise or lower tool handle to align door. Comes with tow-headed pin adapter for both large and small latches. Specially designed handle for optimum leverage, makes adjustment fast and easy.

- Adjusts door hinges on most all cars and light trucks.
- Will adjust doors with either bolted or welded hinges.



**KA-6034 Door Hinge Puller**

- 4 Punches & crank handle
- for easy removal and replacement of door hinge pins available are 4 sizes pines for most of cars:
 

Ø 3.00mm x length 110mm	Ø 5.50mm x length 110mm
Ø 5.00mm x length 110mm	Ø 5.00mm x length 125mm



**KA-5245 Alignment Bar**

- Aligns bumpers, panels, hoods, decks and brackets.
- Heavy duty 1-1/4" diameter tubing with two welded hooks for strength and versatility 1/4" chain, 6" long, hooks on both ends.
- Length: 52" (1330mm)
- Chain: L: 73" (1860mm)



**KA-4317 E-Z Store Door Aligning Bar**

- Finally a convenient door aligning tool
- Saves space. Fits easily into your tool drawer.
  - Uses your breaker bar for leverage.
  - Save time. You won't have to hunt for the shop tool.



KA-9021



KA-9020

- For the repair of damaged door lock apertures.
- Suitable for flush fitting or recessed lock holes.

**KA-9021**  
**Door Lock Hole Reforming Tool**

**KA-9020**  
**Door Lock Hole Reforming Tool With Handle**



**KA-6048 Door Frame Opener**

- Capacity: (A) 820 TO 1100mm (B) 1300 TO 1750mm
- That is suitable door frame, engine case, luggage dace, ...etc. reform the deform portion employed, designed for left & right teeth, simple of operating and rapid. The extension range for sedan, compact car etc., is 820-1100mm. The extension range for truck bus etc., large car is 1300-1750mm.



**KA-6407 Door Buzzer Sanity tool**

- Fit most cars application with door jam buzzer switch located by door hinges
- Eliminates irritating door buzzer sound when performing service on cars with door open and ignition with "ON"
- Tool pushes on door jam switch and shuts buzzer "OFF"
- High tension spring keeps consistent pressure on door jam switch
- The flag reminds user to remove tool before closing the door



**KA-6451 Door Aligning Tool**

- The tool is equipped with two universally-sized sharp-knurled wedges of hardened steel for a sold, no-slip grip.
- A flexible handle of spring steel wire connects these wedges.
- Designed for easy access behind both deep box and shallow well hinges.
- Large wedge locks solidly for front door aligning.
- Small wedge easily fits shallow wells of cars.



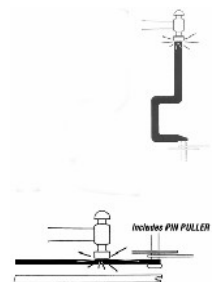
**KA-6452 Door Buzzer Sanity Tool**

- Designed for most of cars with door buzzer located on post behind front door.
- Eliminates irritating door buzzer sound when performing service on vehicle with door open and ignition switch "ON"
- The flag reminds user to remove tool before closing the door.



**KA-6825 Door Hinge "Pin Popper"**

- Removes door hinge pins FAST
- Drives out even stubborn hinge pins
- Direct impact
- Works on all GM cars with removable hinge pins
- Includes PIN PULLER to remover loosened pins







**KA-4304 Coin Drive**

This driver features a specially cured tip to fit Dzus and many other coin headed style screws where the slot has a concaved base. This style fasteners are found on body panels, cowls etc, on aircraft, trucks and special purpose vehicles.

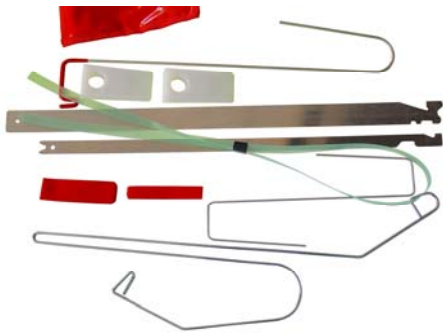
Tip width: 9/19" (14mm)

Length: 5" (125mm)



**KA-2137 Emergency Door Lock Opener**

4 step Folding 22" (500mm)



**KA-9001-1 Universal Lockout Tool Set**

The UNIVERSAL LOCKOUT TOOL SET is produced for the purpose of opening door of both domestic & foreign vehicles.

Note: For better knowledge of door locking system, consult your vehicle manufacturer's manual before using these tools.



**KA-6633 17pc Deluxe Lockout Tool Set**

Tool identification chart

119-6	Knob knabber	235-4	Wide bard - 24"
235-2-02	Reverse zinger	235-2-08	Astro camaro tool
235-2-06	Japaneasy button hook	235-2-05	Dual tool
235-2-01	Inside button hook	235-2-10	Button pull
119-3	Wonder tool	235-2-09	Double curve
119-4	Wedge	235-3	Thin bar - 22"
235-2-07	Porsche tool	235-2-04	Mercedes, VOLVO tool
235-2-03	Camry Chrysler tool	119-2	Gas cap key



**KA-6633-7 7pc Lockout Tool Set**

The universal lockout tool set is produced for the purpose of opening door of both domestic and foreign vehicles.

Note: For better knowledge of door locking system, consult your vehicle manufacture's manual before using these tools.



**KA-2822 VW Air bag Removal Tool**

- For removal of the driver side airbag from steering wheel on 1999-04 new bodystyle VW PASSAT, JETTA, GOLF and EBBTLE.



**KA-3989 Airbag Release Tool GM**

- Tool Design for fast release of the retention springs for removal of the steering wheel airbag module on GM models.
- Vehicles include BUICK, CADILLAC, CHEVROLET, PONTIAC, some trucks and minivans.



**KA-3592 Air Bag Release Tool Kit**

- Use to remove the air bag module from the steering wheel .
- Work on many GM, Ford and Mercedes Benz vehicles .
- Applications: Ford 2000-2004 Taurus/Sable, 1999-2003 Windstar VanGM 1999-2005 Chevrolet Impala, Lumina, Monte Carlo, Venture, Pontiac Bonneville, Grand Prix, Montana, Buick LeSabre, Century, Regal, Olds Intrigue, Cadillac El Dorado, Deville, STS,SLS Mercedes Benz Models 107,123, 124, 126, 129, 140, 163, 164, 170, 201, 202, 203, 208, 209, 210, 211, 215, 219, 220, 221 and 463.



**KA-3978 7pcs Airbag Removal Tool**

- VW PASSAT B 5, POLO, LUPO, AUDI A4 UND A6, SKODA SUPERB
- VW GOLF 4, NEW BEETLE, SEAT, SKODA FABIA, OKTAVIA AB BJ. 99
- VW GOLF 4(BJ. 1998-2004), VW-PASSAT AB BJ. 1997, BORA AB BJ. 1999
- VW-MODELLE U.A : PASSAT
- AB BJ.2000
- Air bag removal tool is used to remove drivers airbag from steering wheel on 1999-04 new body style VW PASSAT, JETTA, GOLF and BEETLE.
- MERCEDES-BENZ, BMW (MEUE MODELLE)



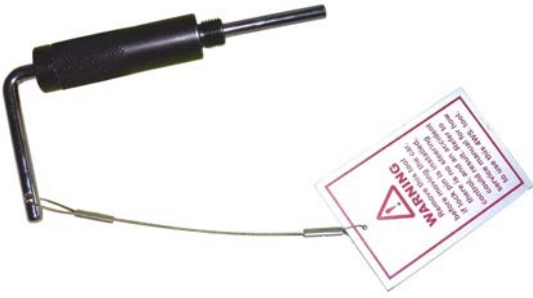
**KA-3978A 12pcs Airbag Removal Tool Set**

- 5- 1/4" Dr. x 87mm(L) Bit Socket:
- 2- Torx: T25 (for BMW), T30(for AUDI, OPEL, RENAULT, VW)
- 2- Torx (tamperproof): T25H (for BMW), T30H (for AUDI, BMW, MERCEDES, OPEL)
- 1- Hex: 5mm (for AUDI)
- 7- Airbag Removal Tool:
- 2- A: VW PASSAT B5, POLO, LUPO; AUDI A4,A6; SKODA SUPERB
- 2- B: For VW GOLF 4, NEW BEETLE, SEAT, SKODA FABIA, OKTAVIA AB BJ. 99
- 1- C: For VW GOLF 4 (BJ, 1998-2004), VW PASSAT AB BJ, 1997, BORA AB BJ.1999
- 1- D: For VW-MODELLE U.A: PASSAT AB BJ.2000
- 1- E: Airbag removal tool is used to remove driver airbag from steering wheel on 1999-04 new bodystyle VW PASSAT, JETTA,GOLF & BEETLE



**KA-3978 Air bag Removal Tool**

- VW PASSAT B 5, POLO, LUPO, AUDI A4 UND A6, SKODA SUPERB
- VW GOLF 4, NEW BEETLE, SEAT, SKODA FABIA, OKTAVIA AB BJ. 99
- VW GOLF 4(BJ. 1998-2004), VW-PASSAT AB BJ. 1997, BORA AB BJ. 1999
- VW-MODELLE U.A : PASSAT
- AB BJ.2000
- Air bag removal tool is used to remove drivers airbag from steering wheel on 1999-04 new body style VW PASSAT, JETTA, GOLF and BEETLE.
- MERCEDES-BENZ, BMW (MEUE MODELLE)



**KA-2415 Hear Honda Four Wheel Steering Tool**

- After making necessary adjustments to front caster & camber and rear camber, center the steering wheel in the straight ahead position.
  - Remove the gearbox cap bolt.
  - Install the KA-2415 tool into the rear steering gearbox.
  - Turn the steering wheel right or left slightly until the tool seats fully.  
Note: the red mark on the pin will not be visible when the tool is completely seated properly.
- Caution: Do not turn the steering wheel when the tool is in place or damage may result to the tool or gearbox.
- When the alignment is completed, remove the KA-2415 tool and replace the gearbox cap bolt. Road test vehicle for proper steering wheel alignment.



**KA-1620 Steering Wheel Level**

- The steering wheel level is a sturdy and simple tool used to assure a level steering wheel during a front-end alignment procedure.
- The tool is easily attached to the steering wheel at the beginning of the alignment procedure.
- It is spring-loaded for automatic centering and self-retaining.



**KA-7028**  
**Steering Wheel Holder**



**KA-7028K**  
**Steering Wheel Holder & Pedal Depressor Kit**



Trigger-controlled unit slides handle to any position on 28-1/2" shaft. Thumb lock releases pressure easily. Use as pedal depressor.

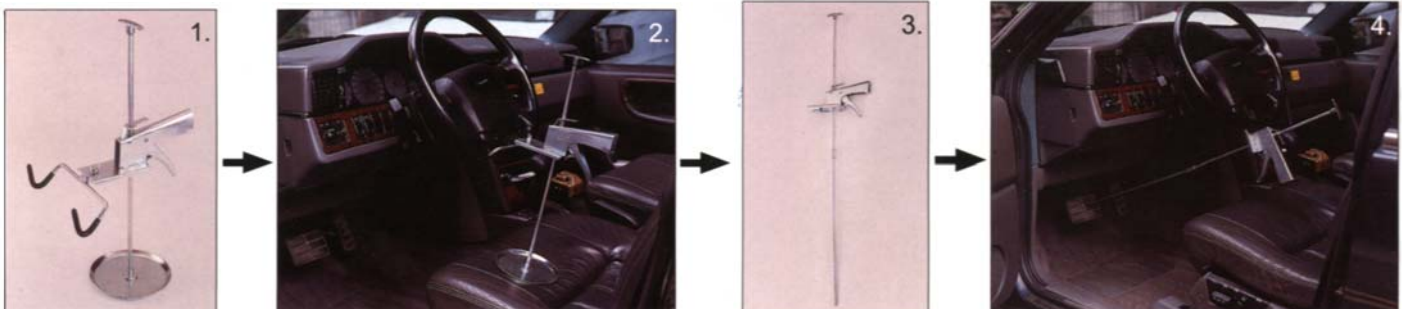
**KA-3044**  
**Brake And Accelerator Pedal Jack**

**STEERING WHEEL:**

- Firmly holds steering wheel in position when setting toe angle.
- Has a trigger - controlled mechanism and a thumb lock release.

**PEDAL DEPRESSOR (BRAKE GAS):**

- This brake and gas depressor is designed to use the front seat of the car to obtain lever age.
- Place the point end of depressor on the pedal and use the small release lever above the spring to free the trigger mechanism in order to place the jack in place against the seat.
- Then press the trigger mechanism to put pressure on the brake or gas pedal. The pedal jack will maintain the pressure until the release lever is pressed.





**KA-1011 Steering Wheel Puller**

Contains all the tools needed to pull steering wheels including the 'X' and 'K' cars and Japanese imports.



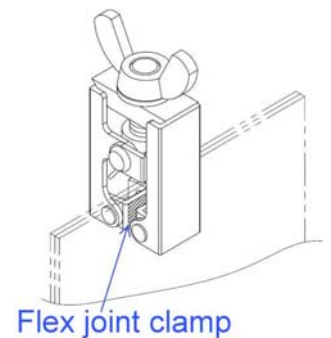
**KA-6818 Universal Steering Wheel Puller**

The puller will remove steering wheels from most passenger cars, light and medium trucks. The 5/8"x5" center screw has a floating swivel for maximum flexibility. The five sets of bolts make this the most complete steering wheel puller available.

- Cross block: 5/16" - 18 x 4-1/2"  
 5/16" - 24 x 3-3/8"  
 3/8" - 16 x 4"  
 1/4" - 28 x 3-1/8"  
 M8 x 1.25 x 78mm

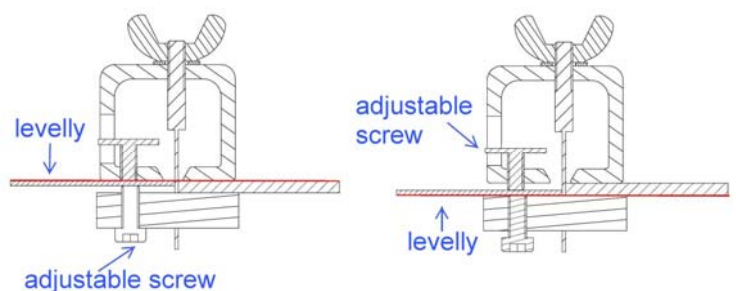
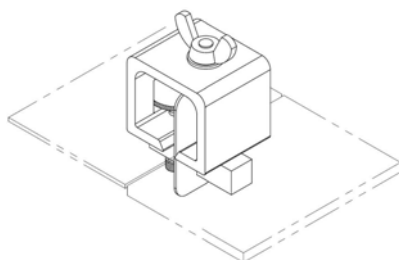
**KA-3256 Micro Welding Clamp (4pcs/set)**

- A fast and effective method of fastening materials for pinch/spot welding
- Unique design generates huge clamping force, ideal for automotive applications and especially effective for positioning.
- Body panels prior to welding, apply to small spaces, such as: truck edges, windows edges, door columns, hatchback...etc
- Adjustable thickness clamp from 0 to 7mm
- One piece size: 230 x 140 x 20mm



**KA-3257 Butt Welding Clamp (4pcs/set)**

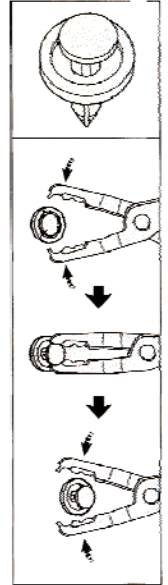
- A simple and efficient way of ensuring a perfect welded butt joint
- Holds panels edge to edge with almost allows accurate joining of dissimilar thicknesses of materials
- Patented level adjustment allows accurate joining of dissimilar thicknesses of materials
- Level adjustment allows flat alignment of top or bottom surface of panels
- Level adjusts between 0 and 3mm either side
- One piece size: 230 x 140 x 30mm





**KA-4290 Clip Removal Pliers (35° )**

- Remove all type of clip.
- The front of the tool are angle and tapered fit easily under a clip.



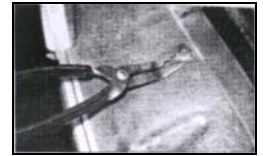
**KA-4291 Clip Removal Pliers (80° )**

- Remove all type of clip.
- The front of the tool are angle and tapered fit easily under a clip.



**KA-6833 Trim Clip Plier**

- Removes all types of clips.
- The front of the tools is tapered will fit easily under a clip, spread the jaws lightly so they will go under and around the clip. Then, close the jaws and the clip saver removes the clip without damage to the clip.
- Great for removing door panels.



**KA-6726 Clip Remover**

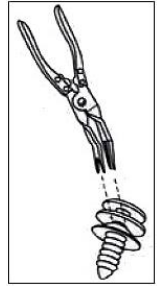
Allows the user easier access and removal of those hard to reach areas recessed nail headed rivet fasteners on bumper covers fender liners etc. Two different head types give you the proper leverage to quickly pull fasteners even in confined area.

**KA-2114 Clip Remover Plier**

- Design to remove & broken rivets (plastic), use in under care cover or door panel.
- Can adjusting the angle from 0° ~ 90°
- L: 9" (230mm)



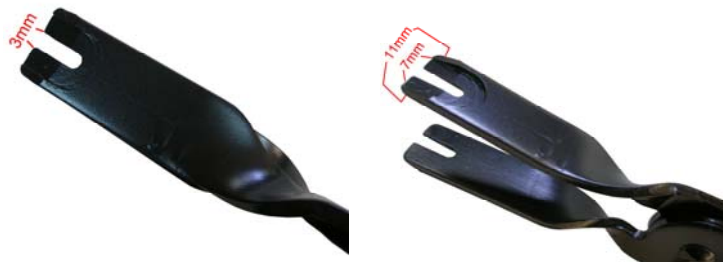
**KA-5123 Clip Remover Plier**



**KA-5123D Clip Remover Plier**



**KA-4442 Positive Lift Action Clip Remover Plier**



**KA-5252 Clip Removal Plier**

- To remove the inner linings of door and other trim items attached in places by the plastic rivets.
- Tapered and angular on the front tips of pliers.
- Design to remove ALL kinds of clips.



Open



Close

**KA-3654K Positive Lift Action Clip Remover Pliers**

Allows easy access and removal of those hard to reach clips on bumper covers, fender liners etc. Features positive lift action without damage to the clip or the surrounding area. Simply insert the jaws under the clip and squeeze the pliers to remove the clip.  
Length: 9-1/2"(240mm)

**Contents:**

- 1- Push Pin Pliers (30 degree offset)
- 1- Push Pin Pliers (80 degree offset)
- 1- Clip remove plier



**Push Pin Pliers**

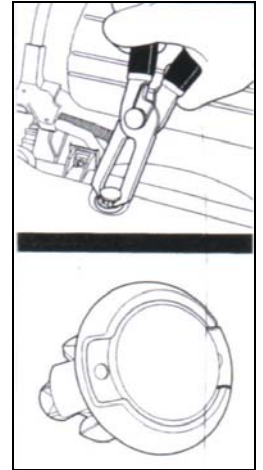
- For easy removal of plastic anchor with center pins found on most late model us and import cars
- Specially designed for removal of push pins with center locking pin.
- Quickly removes plastic anchors that have a center pins without damage to pins or anchor.
- Tool lifts the center pin and pulls anchor in one simple step.
- Anchors common on Honda, Toyota, GM, Ford, Chrysler, and many other late model vehicles
- Patent pending



KA-3277 Push Pin Pliers (80°)

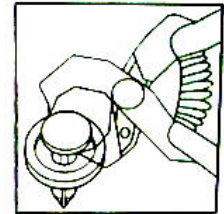


KA-3277A (30°)



**KA-3277K 2pcs Mini Clip Plier Set**

- Special design touse on small space
- Size: 20 x 100mm  
26 x 100mm



**KA-3199 Removal Tool For Inside Rearview mirror**



**KA-6845 Clip Remover Tool**

- Length: 265mm



**KA-2441 5pc Handy Remover Set**

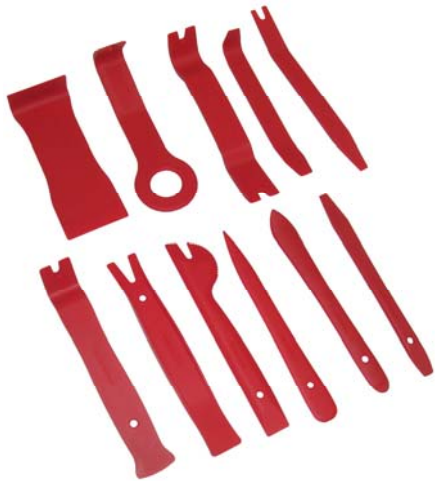
For plastic upholstery fasteners. Place tool under edge of door panel and insert into fastener as fast as possible, ten simply pay up. A rugged tool.

- Extra Slim and Unique Shape for Delicate Jobs such as removing small rivet or fine trims, bezels of dashboards, door panels, door locks, electronic seat controls, gear shifter, inner lining,...etc.
- Made of High Quality Impact-resistant Nylon Material.
- Does not damage or scratch the surface.

\* **Multiple Applications**



KA-2441-6 6pcs Mini Panel Removal Set



KA-2441-11 11pcs Extra Slim Panel / Clip Remover Tool Set  
- Pouch bag with tie belt



KA-5078 2pcs Mini Panel Removal



KA-5079 4pcs Mini Panel Removal





**KA-5164**  
**6pc Soft Crisp Trim Pad Tool**

- L: 3pcs - 500mm
- 3pcs - 240mm



**KA-2411 Universal Window Regulator and Door Handle Clip Remover**

- Instant removal of door handle and window regulator clips on most vehicles.
- No sharp edges to damage upholstery.
- Spring steel with vinyl grip.



**KA-6025 10-In-1 Trim Tool**

Made in tempered spring steel handle is coated with red heavy-duty plastic

1. Molding remover  
semi-sharp beveled edge for removing protector moulds and badges retained by 2-sides tape without scratching
2. Windshield wiper wrench
3. Door rubber metal clip inserter
4. Door weather strip clip remover
5. Door trim-bezel clip remover
6. Door handle clip remover
7. Headlamp spring tool
8. Windshield molding clip remover
9. Door rubber plastic clip remover
10. Serrated edge for panel seam clean up



**KA-6026 3 In 1 Auto Remover**

Material: spring steel.  
For door rubber clip & plastic clip remover.  
For door handle clip remover.  
For head lamp spring remover.



**KA-6004 Door Handle and Window Lift Remover**

Tool compresses the door handle spring clip far enough so that the handle can be removed while the spring clip remains on the handle. Use tool's reverse end to disengage clip holding door upholstery panels. Remover fits GM, Ford and other cars using type of clip shown.



KA-6283 / KA-6845A



KA-6284



KA-6285



KA-6286



KA-6287

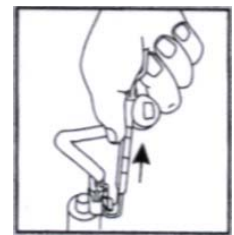
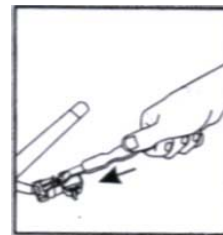
**Door Pad Remover**

Item No.	Length
KA-6283	190mm
KA-6845A	230mm
KA-6284	200mm
KA-6285	235mm
KA-6286	235mm
KA-6287	180mm



**KA-3872 2pc Clip Remover**

- L:158 & 150mm



**KA-6030 Trim Pad Remover**

Designed especially for removing plastic trim pad fasteners. It reaches under the trim panel, supports & grips the fastener, and removes it without breakage or scratched paint.



**KA-6029 Clip-Grip Tool**

This is another extremely versatile and handy auto-body shop tool. You will find our truly universal **Clip-Grip Tool** removes the trim pad hood insulation, body side molding and door weather strip clips.

- Two different sizes of grooves easily remove trim pad fasteners on most vehicles.



**KA-4297K 4pcs Door Service Sets**

- A handy tool set which includes a door handle tool, two door panel removers, and a GM door trim pad remover. Together, they handle a wide range of service applications.



**KA-4298 Door Panel Remover**

- “V” notch removes a variety of door and body trim fasteners. Long curved shank supplies adequate leverage for most difficult trim fasteners. When properly used, this tool will not damage trim or body.



**KA-4300 Door Panel Remover**

- “V” notch removes a variety of door and body trim fasteners. Long curved shank supplies adequate leverage for most difficult trim fasteners. When properly used, this tool will not damage trim or body.
- “V” notch. 0.937”(23.7mm) wide with 1/2” depth.



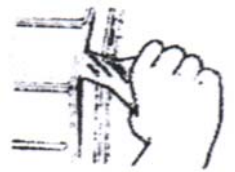
**KA-4301 Door Panel Remover**

- “U” notch removes a variety of door and body trim fasteners. Long curved shank supplies adequate leverage for most difficult trim fasteners. When properly used, this tool will not damage trim or body.
- “U” notch. 0.35”(8.9mm) wide with 1/2” depth.



**KA-4299 Door Handle and Window Lift Remover**

- Compresses the door handle spring clip far enough so that the handle can be removed while the spring clip remains on the handle. Use tool’s reverse end to disengage clip holding door upholstery panels. Fits GM for Ford and other cars using type of clip shown.



**KA-6027-1 Door Handle Clip Remover**

- The most widely used tool for blind removal of inside handles.
- Simple alignment with shaft of handle will locate clip for instant removal. Tool compresses door handle spring just far enough so that handle can be removed.



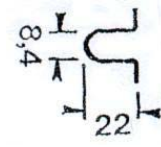
**KA-5077K**  
**5pcs Trim Pin Removers**

- Stainless steel blader
- Packing: Double Blister



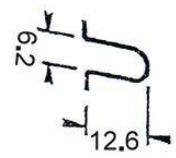
**KA-5077A Trim Pin Remover**

- Stainless steel blader
- Double - Fold
- L: 258mm



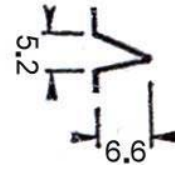
**KA-5077B Trim Pin Remover**

- Stainless steel blader
- L: 233mm
- Bent: 21°



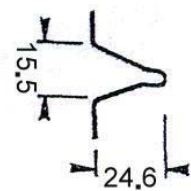
**KA-5077C Trim Pin Remover**

- Stainless steel blader
- L: 233mm
- Bent: 21°



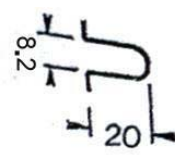
**KA-5077D Trim Pin Remover**

- Stainless steel blader
- L: 233mm
- Bent: 21°



**KA-5077E Trim Pin Remover**

- Stainless steel blader
- L: 233mm
- Bent: 21°





**KA-4305 Utility Wedge Set**

- 3pcs Utility wedge set
- 30mm Wedge, (1)60mm and (1) dismantling tool



**KA-4447 BENZ Wedge Set**

Use to safely remove the wood & plastic pieces on the door panels as well as on the dashboard, without damaging it.

Applicable: all Mercedes-BENZ



KA-2916

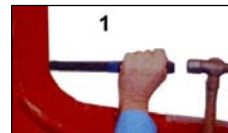
**Seam Buster- Separate Spot Welded or Bonded Panels Easily**

- Specially designed for rockers, quarter panel and any pinch-weldings.
- Saving labor and times for each panel replacement.
- Two sharpened edges.
  - Side Edge: move the panels apart with causing damage
  - Sharp Edge: penetrate between the panels.
- Made of Extra Tough Alloy Steel
- Shock-Absorbing Cushioned handle.
- Length: 300mm



KA-2916V

KA-2916 Flat type  
KA-2916V "V" Type





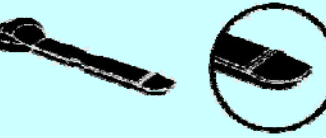




**KA-3698 5pcs Wire Installer's Kit**

- Developed for safer and more accurate working in electrical wiring, re-wiring, and component placement and removal operations while reducing the chance of damage to a wire's insulation. Useful in all kinds of automotive, aerospace, marine and industrial environments these wire control tools allow the user to push, pull and feed wires safer in hard to reach areas and panels.
- Carefully selected tool tips assist the placement and extraction of cables, connectors and components.
- Enable safer prying and opening of control panels, inspection covers and plastic case assemblies.

*\* NOT WARRANTED FOR HIGH VOLTAGE USE\**

	<p><b>KA-3698-1 Small Gauge Wire Feed Tool</b>                  Wire guide tool replaces common industry steel spoons that are used in this type of wire feeding operations. Designed to assist re-wiring through existing harnesses and allows safe cutting of cable ties by providing a backing cradle.  <i>* NOT WARRANTED FOR HIGH VOLTAGE USE*</i></p>
	<p><b>KA-3698-2 Wire soldering/Case Opener Tool (Double Ended)</b>                  Keeping fingers and metal tools away from component edges reduces risk of operator injury and electrical shorting. Also assists component placement during soldering operations. (no direct contact with soldering tools)  <i>* NOT WARRANTED FOR HIGH VOLTAGE USE*</i></p>
	<p><b>KA-3698-3 Wire Pulling Tool</b>                  Allows pulling wires that are in tight spaces such as behind dashes and machine panels, reducing the chance of damaging the insulation.  <i>* NOT WARRANTED FOR HIGH VOLTAGE USE*</i></p>
	<p><b>KA-3698-4 Wire Stuffing Tool</b>                  Allows stuffing of wires that are located in tight spaces such as behind dashes and machine panels, reducing the chance of damaging the insulations.  <i>* NOT WARRANTED FOR HIGH VOLTAGE USE*</i></p>
	<p><b>KA-3698-5 Micro Case Pry Tool</b>                  Micro pry tool tip designed to be used on "steel screw driver slots" found everywhere in car interiors, electronic case covers, appliances, etc. Very short rocker point allows micro prying with low surface point pressure as well.  <i>* NOT WARRANTED FOR HIGH VOLTAGE USE*</i></p>



**KA-4282**  
**2" Suction Cup Kit**

- 2pc/set
- Capacity: Each 12kgs



**KA-6725**  
**3" Vacuum Suction Cup**

- Capacity: 25kgs



**KA-6585**  
**4" Power Grip Vacuum Cup**

- Capacity: 45kgs



**PA-6585N**  
**4" Power Grip Vacuum Cup**

- Capacity: 45kgs



**KA-6601**  
**4" Power Grip Vacuum Cup**

- Capacity: 30kgs
- Diameter: 123mm, 4.84"
- Weight: 480kgs
- Aluminum



**KA-6603**  
**Side Type Vacuum Cup**

- Capacity: 50kgs
- Diameter: 123mm, 4.84"
- Weight: 480kgs



**KA-6584A**  
**2 Vacuum Cup**

- Capacity: 70kgs



**KA-6604**  
**2 Vacuum Cup**

- Capacity: 50kgs
- Diameter: 117mm, 4.6"
- Weight: 780kgs
- Aluminum



**KA-6605**  
**2 Vacuum Cup**

- Capacity: 35kgs
- Diameter: 117mm, 4.6"
- Weight: 1180kgs
- Aluminum
- Flexible



**KA-2414**  
**4" 2 Vacuum Cup**

- Capacity: 80kgs
- Flexible



**KA-6584B**  
**3 Vacuum Cup**

- Capacity: 110 kgs



**KA-2724**  
**2pc Strip Holder**

- Pad: 82mm



**KA-6045 6" Auto Vacuum Suction Cup (Rubber)**

- Capacity: 25kgs



**KA-6642 5" Multi-Function Powerful Suction Cup**

- Capacity: 80kgs



**Multi-Function Powerful Suction Cup**

- Rubber

ITEM NO.	CAPACITY	DIAMETER
KA-6602	50kgs	5"
KA-6602J	15kgs	3.93"
KA-6602K	10kgs	2.95"



**KA-4270 Windshield Suction Cup Kit**

- The kit combines vacuum cup and ratcheting tie-down to provide a safe and comfortable removal way of any piece of glass for user.
- Each vacuum cup is designed to swivel up and down 30°, and so the cups will fit any glass with a radical curve.
- Kit contains one 1" x 12' ratcheting tie-down and two suction lifters with two vacuum cups.
- Flexible



**KA-4318 Winder Holder**

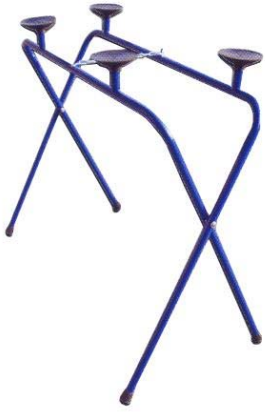
- Hold up the window glass while working regulator, works in all cars and trucks with a top window frame.



**KA-6049 Pneumatic Sheet Concave Sucker**

That is employed the pneu. sucking disk to suck the can cave sheet and restored by backward collar force for restoring the concave sheet into the original condition.





**KA-5521**  
**Windshield Stand**  
(Folding Type)

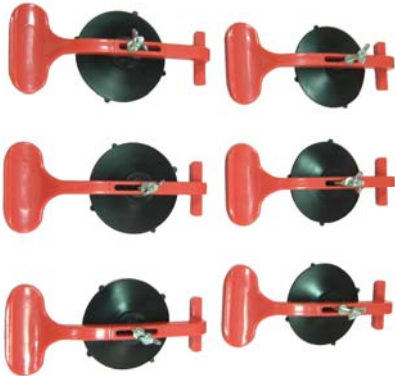
- L103 x W45 x H85 cm  
N.W.: 6.8kgs  
G.W.: 9kgs  
CU.FT: 4.1'



**Work Bench**  
(Folding Type)

- KA-5521A**
- L100 x W70 x H70 cm  
N.W.: 9kgs  
G.W.: 10kgs  
CU.FT: 1.5'

- KA-5521B**
- L60 x W70 x H70 cm  
N.W.: 9kgs  
G.W.: 10kgs  
CU.FT: 1.3'



**KA-7234K Universal Vacuum Clamp**

**DESCRIPTION:**

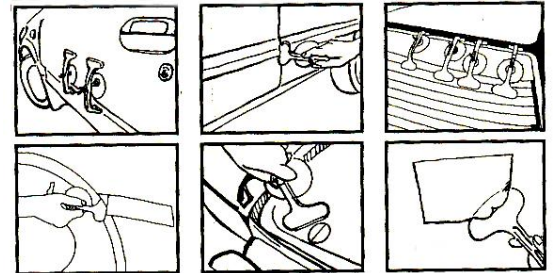
This product is a fixing tool that makes it convenient to fix sticky material or label sticking on the products. The characteristic of the product is that it does not need to fix with hand for a long time and it will have the effect of stable fixation and adherence.

**METHOD FOR USAGE:**

- Before using, the dirt around the edge of construction site should be cleaned.
- Press the top of the screw to expel remaining air from the sucker. Then rotate the screw nut on the screw to make it fasten. And pull with hand to make sure the sucker positioning.
- On the one side of the handle of the product, there is a simple scraper, which scrapes remaining sticky materials on the other side, there is a vertical fixing tool with an angle of 90° to make sticky materials edacity fix in the range.

**MATTERS NEEDING ATTENTION:**

The environs of the material that needs to be fixed should be smooth plane.



**KA-1231 Handheld Suction Lifter**

- 2-3/4" suction cup made by oil-resist rubber.
- ABS+PC plastic handle, quick-release mechanism for easy installation.
- Max Capacity: 8kgs
- Quantity: 1pc
- Patented

**KA-6032 Windshield Removal Kit**



**A. Wire**

Three strong galvanized steel wires braided to form one wire.

**B. Wire gripping handles x 2**

A & B feed the wire through the hole in the wedge shaft. Loop it through the hole at the top of the shaft. Then back into the handle. Pressing the wedge back into the handle, the wire is hold.

**C. Windshield removal tool**

Cuts the butyl adhesive compound around windshield

**D. Wire feeder tool**

Designed for easy and flexible insertion of wire through polyurethane, allowing speedy removal of bonded windshield.

**E. Trim pad remover**

Place the tool under the edge of the door upholstery panel and insert it into the fastener as far as possible, then simple pry up.

**F. Windshield molding release tool**

Use for removal of windshield molding

**KA-6033 Windshield Installation Kit**



**A. Rope insert tool**

Use this tool to insert the rope into rubber gaskets. The handle feeds rope through its stem as you pull it around the gasket.

**B. Assort tip for insert tool**

For inserting locking strip into windshield seal. Different shaped heads interchange for most types of locking strip.

**C. Curved hook tool**

Curved hook tool used for inserting and cleaning rubber gaskets.

**D. Straight hook tool**

Straight hook tool used for inserting and cleaning rubber gaskets.

**E. Cleaning tool**

Designed for the removal of broken glass for the side runners without removing them.

**KA-7422 Windshield Removal Kit**



**A. Wire feeder tool (Length: 205mm)**

Designed for easy and flexible insertion of wire through polyurethane, allowing speedy removal of bonded windshield.

**B. 2pc Wire Gripping Handles**

Feed the wire through the hole in the wedge shaft. Loop it through the hole at the top of the shaft. Then back into the handle. Pressing the wedge back into the handle, the wire is held.

**C. 72 Feet square wire**

Material: stainless

**KA-6042 Tight Wire Grips Windshield Remover**



Tight wire grips let you get handle on a tough job pulling windshield wire.

Aluminum handle and steel windshield wire.

Release the screw at the midpoint and insert the wire end tighten the screw.

The wire is now securely bound at each end, able to resist strong tugging.

**KA-7321 Windshield Cut-Out Wire (Stainless Steel-Square)**



- Design provides the fast cutting action possible
- Each wire acts like a cutting saw tooth
- Made of stainless steel 50m per roll





**KA-7025 Wire Handle**

Feed the wire through the hole in the wedge shaft. Loop it through the hole at the top of the shaft. Then back into the handle. Pressing the wedge back into the handle, the wire is held.



**KA-3246 Wire Guide**

- With wire starter, Starting wire is no longer a problem without wire starter braided wire can be almost impossible to put through urethane so you can start cutting. Solid wire can also be hard to start if the urethane is wide.
- To use wire starter just push the hollow stainless steel tube through the urethane, insert the wire through the, pull wire starter out and your wire is in.
- Be sure to lay the flat side of the aluminum handle against the glass and then use your thumb or fingers to push the tube through urethane. Also, be sure to concentrate your force directly in line with the tube. Failure to follow these directions may result in the tube bending.



**KA-3247 Wire Guide**

1. The wire guide's long, narrow shaft protects the dash and interior moldings from being damaged run the wire through the hole at the end of the tool
2. Then with the wire on the round side of the tool, attach the end of the wire in the hole midway up the tool, locking it in place with the set screw, move the tool on the inside of the vehicle, a few inches at a time, while the person on the outside follows doing the cutting.



**KA-6035 Auto Body Pull Rod Set**

Lets you repair dents and creases from outside your car. Straight-shank (Formed-shank) pick pulls to get between closely-shaped panels.



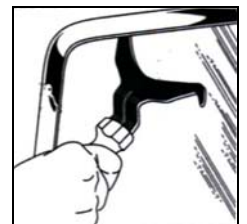
**KA-6353 Pull Rod Kit**

- Use this kit for quick repair of dents and creases from outside the vehicle
- Pull rods eliminate the removal and replacement of headliners upholstery inner panels, etc.



**KA-5126 Window Molding Remover**

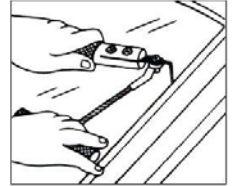
- Tool removes window molding clips on GM, FORD AND AMC VEHICLES.
- To use, place jaw flat against glass, locate clips and roll them out with tip, keeping jaw flat to glass.





**KA-6041 Windshield Removal Tool**

Cable action makes cutting out windshields fast and easy. The easiest and most proven method of removing windshield. A strong tempered steel blade, sharpened to a fine cutting edge, with a large durable. Aluminum handle, combined with a steel cable pull handle assures the easiest. And fastest way of cutting the caulking compound around the windshield. The steel cutting blade can be re-sharpened and after many uses is easily. Replaced with a new blade.



**KA-2812 Windshield Removal Tool**

Cable action makes cutting out windshields fast and easy. The easiest and most proven method of removing windshield. A strong tempered steel blade, sharpened to a fine cutting edge, with a large handle, combined with a steel cable pull handle assures the easiest and fastest way of cutting the caulking compound around the windshield. Tool includes 2 extra blades for replacement and the large handle provides storage function. There is a cap at the end of the large handle. Unlock the cap, put extra blades into the handle and then lock it.



**KA-6041B 6pcs Windshield Removal Replacement Blades**

- Material - tempered spring steel
- Highly sharpened to cut faster



**KA-4275 Windshield Wiper Arm Remover**

- Tool removes wiper arms for most of the vehicles.
- Protective pad on bottom jaw will not scratch painted surfaces. Place jaws between wiper arm and shaft and squeeze handles to remove.



**KA-6062 Windshield Molding/Door Handle Clip Pliers**

For removing most windshield molding clips and door handle clips. Releases clips to remove chrome molding on most windshields and rear glass. Offset handle permits easy access to molding clips. Slips under door handle without damage to panel material.



**KA-6028 Windshield Molding Remover**

It is used to remove trim moldings from around cemented windshields and rear windows. Tools works in either direction, so there is no need to turn it end for end or change tools. Removes moldings in a fraction of the time required with any other tools.



**KA-7029 Window Molding Remover**

- Tool removes clips and spreads rubber gasket on Chrysler Windows. Rounded point spreads zipper-type gaskets



**Windshield Molding Release Tool**

Use for removal of windshield molding on rubberless installation.

**KA-6031A** For GM

**KA-6031B** For FORD



**KA-6007 Windshield Locking Strip Tool**

Wedge openings in 2 widths make short work of installing nearly all locking strips. Includes special tip for dodge truck applications. 4" contoured handle and 4" metal shank.



**KA-6006 Windshield Molding/Door Handle Clip Pliers**

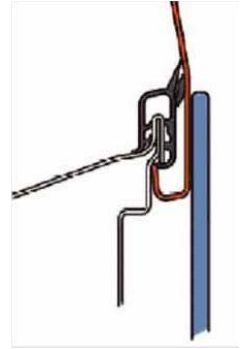
Two double-ended tips to fit most of car. This tool is used when replacing the windshield, rear glass or sliding rear glass on vehicles with locking strips.

Unique design allows tip to swivel 90° in either direction to work where others won't. Select the tip with opening that most closely fits locking strip. Then insert into rubber molding. Thread locking strip into eyelet of tool. Work tool around windshield while feeding locking strip into eyelet. Use soap and water for lubricant to help tool slide in molding, replacement tips all including.



**KA-5512 24" Windshield Weather strip cutter knife**

- Made of aluminum with a steel-retaining block for the blade.
- Allows the user to reach the corners of the windshield easily.
- A short screw can secure the blade tightly without stripping the screw.
- An unique design that allows you to store an extra blade in the handle.(it is not included)

**KA-2915 Door Weather Strip Molding Remover****KA-6339 Weather stripping Tool**

- This tool provides a fast and efficient way to lift rubber weather stripping up around auto windows.

**KA-6047 3 In 1 Auto Windshield Cleaning Tool**

Scraper: w/ Plastic razor blade

Slide needle: cleaning windshield washer nozzle holes.

Wiper clean: cleaning rain-brush with 2pcs of sandpaper.

**KA-6333 Windshield Wiper Water Jet Outlet Needle**

- Used to keep auto windshield wiper water jet outlets free of foreign matter and able to spray freely
- To correct the direction spray from the water outlet
- To employ metallic or non-metallic needles

**KA-6077K**

**14pcs Automobile Glass & Windshield Remover Tool Kit**

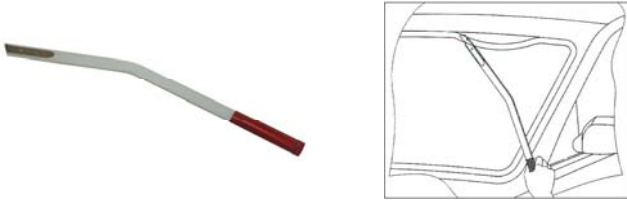
The kit supplied with adequate tools to cut the vinyl adhesive compound and urethane around windshield and auto glass.



Contents:

**#1 24" Weather Strip Cutting Knife**

The angle of handle provides more leverage to put more power into the cut and better side-to-side control so you can easily follow the first cut when you make your second cut. It is great rear automobile glass.

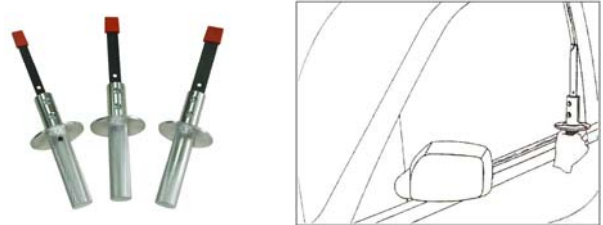
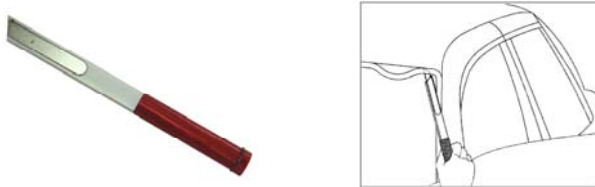


- #3 Replaceable Blade Pinchweld Scraper (3/4" wide)
- #4 Replaceable Blade Pinchweld Scraper (5/8" wide)
- #5 Replaceable Blade Pinchweld Scraper (1/2" wide)

The handle is made of aluminum and unique design provides a protection function to avoid slip and injury when working. The blade is made of spring steel and hard enough to hold and edge, but soft enough so it will not dig into the pinchweld. It comes with a safety cover that keeps the blade sharp and prevents the user from cutting himself when the scraper is in the toolbox.

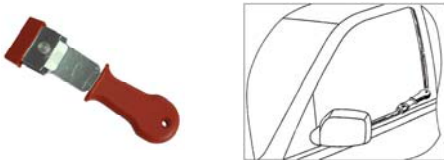
**#2 12" Weather Strip Cutting Knife**

It is also ideal toll for rear automobile glass. The round handle makes the knife easy to grip and provides a tremendous amount of leverage.



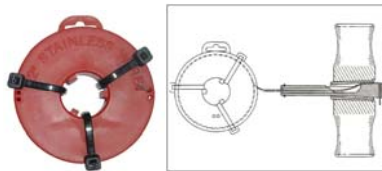
**#6 Wide Pinchweld Scraper**

It is ideal to use across the bottom, because the razor blade scraper is too wide to use across the top or up most "A" pillars. Blade is replaceable and also comes with a safety cover.



**#7 72 feet triangle Wire**

Material: Stainless



**#8 2pc Wire Gripping Handles**

Feed the wire (319-07) through the hole in the wedge shaft. Loop it through the hold at the top of the shaft. Then back into the handle. Pressing the wedge back into the handle, the wire is held.



**#9 Windshield Removal Tool**

Cuts the vinyl adhesive compound around windshield. It is made of aluminum and unique handle design provides a protection function to avoid slip and injury when working (It is detachable).



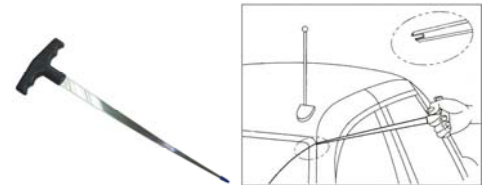
**#10 Hexagonal Head Wrench**

Use to detach the windshield removal tool (318-08).



**#11 Wire Feeder Tool**

Designed for easy and flexible insertion of wire through polyurethane, allowing speedy removal of bonded windshield.



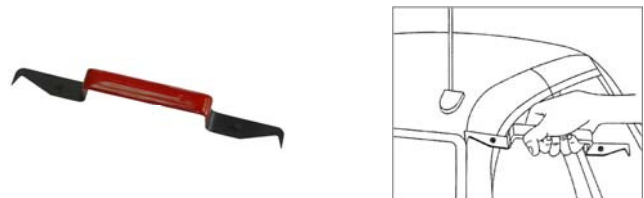
**#12 Trim Pad Remover**

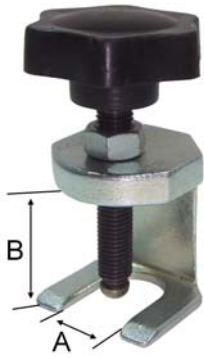
Place the tool under the edge of the door upholstery panel and insert it into the fastener as far as possible, then simple pry up.



**#13 Windshield Molding Release Tool**

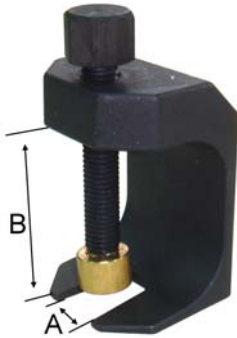
Use for removal of windshield molding on rubberless installation.





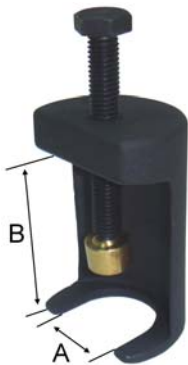
**KA-2122 Windscreen Wiper Arm Removal Tool**

- The compact design offers easy access in confined spaces and eliminates the risk of damage to the wiper arm or surrounding paintwork.
- A simple, effective tool allowing easy removal of those stubborn wiper arms. Suitable for both taper and taper spline spigots.
- Size: A: 16mm, B: 26mm



**KA-7753B Windscreen Wiper Arm Removal Tool**

- The special design offers easy access in confined spaces and eliminates the risk of damage to the wiper arms.
- A simple, effective tool allowing easy removal the stubborn wiper arms.
- Size: A: 16mm, B: 46mm



**KA-7753C Windscreen Wiper Arm Removal Tool**

- The special design offers easy access in confined spaces and eliminates the risk of damage to the wiper arms.
- A simple, effective tool allowing easy removal the stubborn wiper arms.
- Size: A: 26mm, B: 42mm



**KA-7753A Universal Wiper Arm Puller**

- Adjustable, compact and light easy to use: prevents damaging wiper arm.
- Cross-piece special for wiper featuring a nozzle.



**KA-7753 Windshield Wiper Puller**

The Wiper Puller is specially designed for use to remove the rear wiper arms with water jets included in the spindle of motorcars.

For use with Skoda, Audi, Seat, VW(Volkswagen) and other.

- Always loosen the nut from the wiper arm BUT never totally remove the nut.
- Removal of the nut may cause damage to the plastic arm of metal ferrule (where fitted).
- Locate the hole of the bolt over the spindle.
- Place the jaws of the tool under the wiper arm at the base of the spindle.
- Tighten with fingers first.
- Use 3/8" drive ratchet to 'dis-engage' arm from spindle.
- Lubrication maybe required.





**KA-7753N**  
**Heavy Duty Windshield Wiper Puller**



**KA-7751K Wiper-Arm Puller Set**

**Suitable for: VW-Audi, BMW, Ford, Mercedes, Opel, Peugeot, etc.**

The first universal Puller Set to remove bolted Windscreen Wiper Arms, especially for those which have become rusted or corroded onto the drive-shaft. Stubborn and deep-seated Wiper Arms may be quickly and easily removed using this Puller Set. Wiper Arms with integrated Screen-Wash nozzles - e.g. VW-Audi, BMW etc. on the rear window - can be easily removed by using the Slide hammer included in the Set. Wiper Arms with central holes may be removed by using the Pressure Spindle. Those Wiper Arms with no central hole require the Pressure Bolt to be used with the Pressure Adaptor supplied.



**KA-3975 Universal Windscreen Wiper Arm Puller Set**

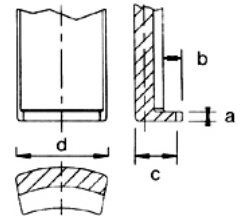
for cars and trucks

Contents:

- |                  |                       |                 |
|------------------|-----------------------|-----------------|
| ■ 8 grippers     | ■ 1 drive             | ■ 1 spindle-cap |
| ■ 1 hollow-cap   | ■ 1 spindle-extension | ■ 1 puller      |
| ■ 2 special-legs | ■ 1 slide hammer      |                 |

**Cars:** Audi, Alfa-Romeo, BMW, Chrysler-Jeep, Citroen, Chevrolet-Daewoo, Daihatsu, Fiat, Ford, Honda, Hyundai, Jaguar, KIA, Land Rover, Mazda, MG-Rover, MB, Mitsubishi, Nissan, Opel, Peugeot, Porsche, Renault, Saab, Seat, Skoda, Smart, Suzuki, Toyota, Volvo, VW...

**Trucks:** MAN, MB, Scania...



**KA-3962 Wiper Arm Puller**

- 2-arm
- With Krallex-Legs
- For extreme narrow spaces.
- With integrated Leg-Clamp
- To prevent slipping out of position.
- Its special shape, the two different hook couples (with extra thin straight tips and rounded tips) and the adjusting nut make this puller almost universal in its range of application.
- Patent : Europe, U.S.A, Taiwan.



∅ mm min. - max.	↓ mm	max. torque Nm	max. capacity t KN	spindle mm thread x -length	SW	Leg mm			
						a	b	c	d
0 - 60	50	40	2,5 25	M12 x 90	13	2,5	5	8	26,5

**KA-3963 Wiper Arm Puller**

- 2-arm
- With Special-Krallex-Legs
- With integrated Leg-Clamp
- For extreme narrow spaces.
- Its special shape, the two different hook couples (with extra thin straight tips and rounded tips) and the adjusting nut make this puller almost universal in its range of application.
- Patent : Europe, U.S.A, Taiwan.



∅ mm min. - max.	↓ mm	max. torque Nm	max. capacity t KN	spindle mm thread x -length	SW	Leg mm			
						a	b	c	d
0 - 60	50	25	1,5 15	M12 x 90	13	2,5	3	6	15

**KA-3964 Wiper Arm Puller**

- 2-arm
- With Special-Krallex-Legs
- With integrated Leg-Clamp
- Its special shape, the two different hook couples (with extra thin straight tips and rounded tips) and the adjusting nut make this puller almost universal in its range of application.
- Application on Audi, BMW, Chevrol/Daewoo, Chrysler-Jeep, Citroen, Fiat, Ford, Honda, Hyundai, KIA, Land Rover, Mazda, MG-Rover, Nissan, Peugeot, Porsche, VW, MAN, MB, Scania.
- Patent : Europe, U.S.A, Taiwan.



∅ mm min. - max.	↓ mm	max. torque Nm	max. capacity t KN	spindle mm thread x -length	SW	Leg mm			
						a	b	c	d
0 - 60	50	40	2,5 25	M12 x 90	13	2,5	5	8	26,5

∅ mm min. - max.	↓ mm	max. torque Nm	max. capacity t KN	spindle mm thread x -length	SW	Leg mm			
						a	b	c	d
0 - 60	50	25	1,5 15	M12 x 90	13	2,5	3	6	15

**KA-2713 Inflatable Hand Pumper W/ 3pcs Inflatable Pads**

Contents:

- 1pc - Inflatable hand pumper
- 1pc - 7" (180mm) x 1-1/2" (38mm)
- 1pc - 7-1/2" (190mm) x 2-3/8" (60mm)
- 1pc - 6-3/8" (160mm) x 6-3/8" (160mm)



Squeezing the bulb on his inflatable bag produces up to 50 psi of Constant outward pressure to push the glass out of the opening as you cut through the urethane. The pumper is placed between the windshield and the body, and saves you from having Push out the glass with your head and shoulders. Best when used in pairs.



**KA-7794 Windshield Leverage Device - for larger vehicle**

Special large size and design for removing and installation of the front and rear window of car and larger vehicles.

- 1pc - Hand Pump, L:360mm
- 1pc - 420mm X 140mm Pad
- 1pc - 325mm X 120mm Pad



**KA-7794D Windshield Leverage Device Set**

- 1pc - Inflatable hand pumper
- 1pc - 180mm x 38mm
- 1pc - 190mm x 60mm
- 1pc - 160mm x 160mm
- 1pc - 325mm x 120mm
- 1pc - 420mm x 140mm



**KA-7794A Windshield Leverage Device**

- Hose Length: 1800mm
- Inflatable Bag: 205 x 205mm



**KA-7794B Windshield Leverage Device**

- Hose Length: 1800mm
- Inflatable Bag: 360 x 205mm



**KA-7794C Windshield Leverage Device**

- Hose Length: 1800mm
- Inflatable Bag: 420 x 140mm



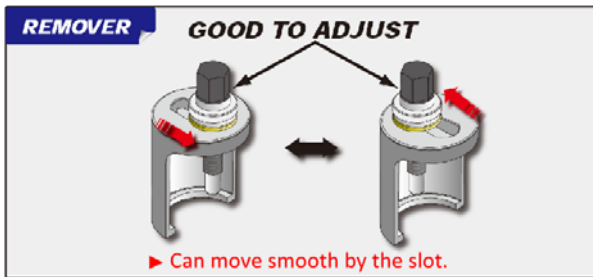
**KA-4284 Air Inflate For Unlock Door (Vehicle)**

This inflate design easily and safely to separate the door frame from the vehicle body.



**KA-7266 5pcs Wiper Arm Puller Set**

- Universal applications
- Provide 4 adjustable removers and one high versatility puller fits nearly all difficult wiper arm removing works.
- For deep and narrow space, the **"limited space killer"** puller is absolutely recommended.



**How to use remover**



1. Remove the plastic cover

2. Choose spanner and release the nut

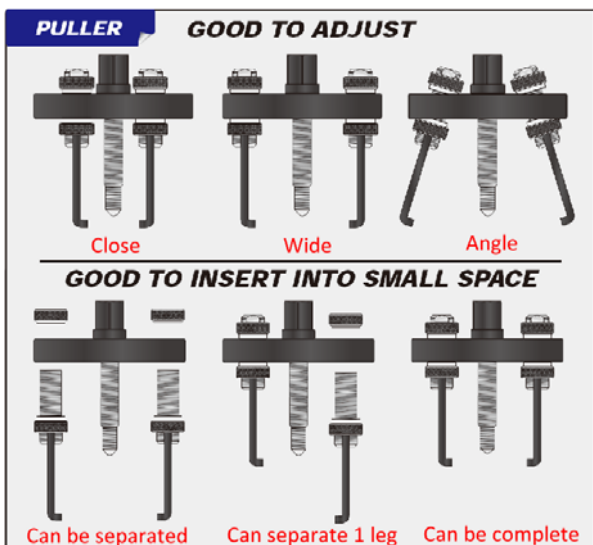
3. Choose a suitable size remover from this set



4. Hook the remove and seize the target. Adjust the spindle height and distance. The slot helps position work well.

5. Screw the spindle with hand or 12mm spanner, then release the target easily.

6. Remove the wiper arm, work done



**How to use the puller**



1. Remove the plastic cover

2. Choose spanner and release the nut

3. Screw out the small nut on top; install one leg first and adjust tool



4. Install second leg and adjust two legs to seize well

5. Screw the spindle clockwise with 12mm spanner

6. Release the target and remove the wiper arm easily.